

General Purpose Pressure Switch

Model PS-10

These adjustable, pre-set Pressure Switches are suitable for pressure and/or flow detection in BERMAD valve systems such as Deluge or Pre-action, or with other control valves for non-hazardous locations. The Pressure Switches are also used to provide a low pressure supervisory signal for BERMAD Pre-action Systems or Pneumatically controlled deluge valves.

Features

- Solid metal enclosure
- NEMA 4 / IP 55 watertight and dust proof - For indoor or outdoor use
- 17 bar (250 psi) system pressure rated
- One SPDT or two SPDT version for DPDT action (marked with 2A suffix)
- Convenient field adjustments
- Global approvals
- Reliable and dependable device

Approvals

- UL Listed
- FM Approved
- VdS Approved
- LPC Approved
- CE Certified

Materials

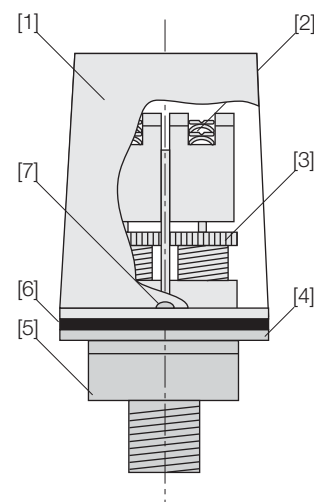
- Wetted parts: Thermo plastic, corrosion resistant
- Cover: Die Cast Aluminum with textured red powder coat finish
- Base: Zinc-plated Steel

End Connections

- Pressure: 1/2" NPT (M)
- Electric: 12 mm (1/2") Conduit Hole

Typical Installation

The Pressure Switch shall be connected to the BERMAD valve alarm discharge piping. Ensure that no shut-off valves are located between the alarm piping and the Pressure Switch. The device should be mounted in an upright position. A IP 55/NEMA 4 or IP 65 electric connection is required for outdoor installations.



Major Parts

- [1] Cover
- [2] Terminal screws
- [3] Adjustment knob
- [4] Base
- [5] Pressure connection
- [6] Gasket
- [7] Cover screw

BERMAD Fire Protection

General Purpose Pressure Switch, Model PS-10

Indicating Devices

Technical Data

Pressure Rating

- 17 bar (250 psi)

Pressure Setting & Range

- Model PS10
 - Factory set: 0.4 bar (6 psi)
 - Adjusting range: 0.3 - 1.4 bar (4 to 20 psi)
 - Maximum deadband: 0.07 bar (1 psi)

Electrical Ratings

- 15 Amps @ 125/250VAC
- 2.5 Amps @ 30VDC
- Single or dual SPDT (from C)

Enclosure Class

- NEMA 4 weather-proof IP 55 rated

Ambient Temperature

- 40°C to 60°C (-40°F to 140°F)

Weight

- Approx. 0.60 kg (21 oz)

Installation - Caution

An uninsulated section of a single conductor should not be looped around the terminal to serve as two separate connections.

The wire must be severed, thereby providing supervision of the connection in the event that the wire becomes dislodged from under the terminal.

Note:

To prevent leakage, apply teflon tape sealant to male threads only.

Warning:

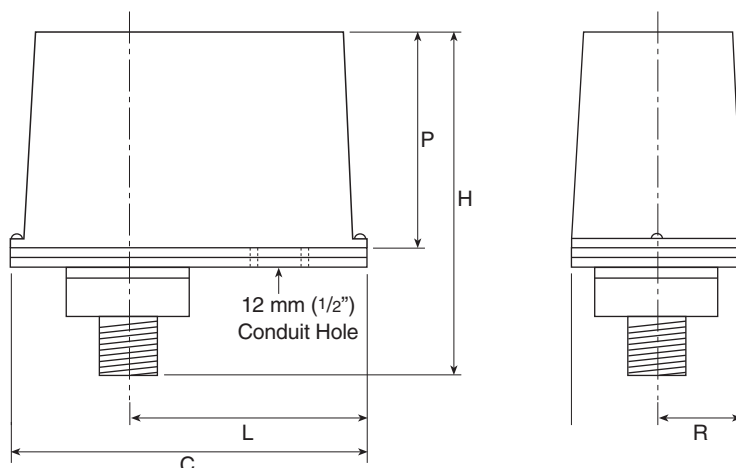
Use of pipe joint cement may result in obstruction of the aperture and loss of signal.

Testing

Test by opening the water bypass alarm test valve.
Caution: The above test might also activate any other circuit closer or water motor gongs that are present on the system.

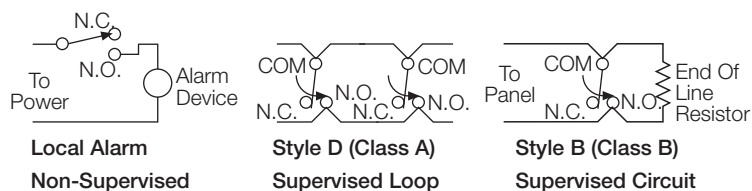
Note:

The operation of the PS-10 should be tested upon completion of installation and periodically thereafter in accordance with the applicable NFPA codes and standards and/or the authority having jurisdiction (manufacturer recommends quarterly or more frequently).



	mm	inch
H	111	4 ³ / ₈
P	70	2 ³ / ₄
L	81	3 ⁶ / ₁₆
C	121	4 ³ / ₄
R	29	1 ¹ / ₈

Typical Electrical Connections



Pressure Switch Termination

