

Water Motor Alarm

The Water Motor Alarm is a hydromechanical automatic sound warning device actuated by water flow. It sounds a continuous alarm while a Deluge or Water Control Valve operates.

This unit is suitable for wall or pipe mounting and is suited for outdoor installation.

The Water Motor Alarm gong assembly package is supplied loose and includes a 3/4" strainer.

Features

- Self contained, line pressure operated
- Quick and positive operation
- Weather-proof
- No cover needed, suited for outdoor installation

Approvals

- UL Listed
- Option: FM Approved

Materials

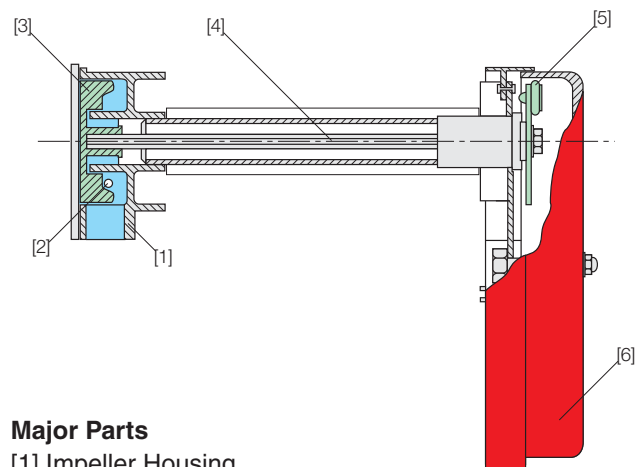
- Gong: Aluminum
- Housing: Aluminum
- Bolts & Nuts: Galvanized Steel
- Impeller: Delrin
- Nozzle: Brass

End Connections

- Inlet: 3/4" NPT (F)
- Outlet drain: 1" NPT (F)

Operation

When a Deluge Valve is activated, water flows through the valve's trim, discharges to a strainer and into the water motor inlet. From the inlet, the water flows through a nozzle [2] which directs the stream to the impeller [3]. The stream turns the impeller and drive shaft [4], causing the striker arm [5] to rotate, thus producing a continuous alarm. The water is discharged through a 1" (25 mm) drain outlet at the bottom of the impeller housing. The discharged water must be piped through the wall to atmosphere or to a suitable open drain.



Major Parts

- [1] Impeller Housing
- [2] Nozzle
- [3] Impeller
- [4] Drive Shaft
- [5] Alarm Arm Assembly
- [6] Gong

BERMAD Fire Protection

Water Motor Alarm

Indicating Devices

Technical Data

Gong Specifications:

- Outlet Sound: 90 dB
- Diameter: 223 mm (9")

Water Working Pressure:

- Max: 12 bar (175 psi)
- Min: 1 bar (15 psi)

Shipping Weight:

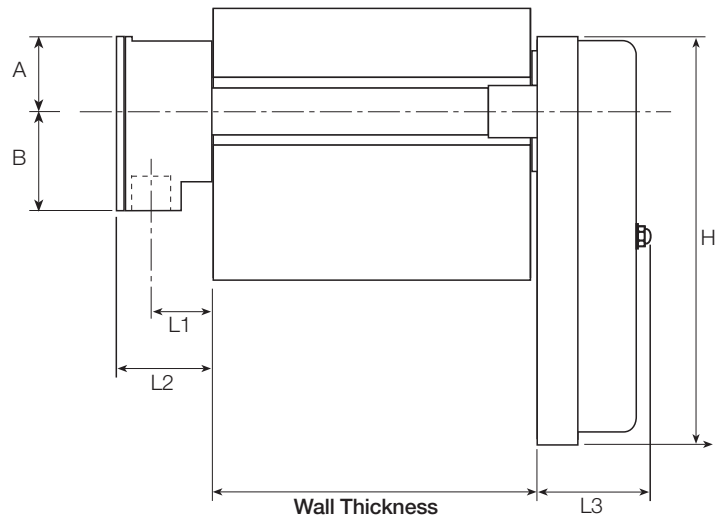
- 3.3 kg (7.5 lbs)

Accessories:

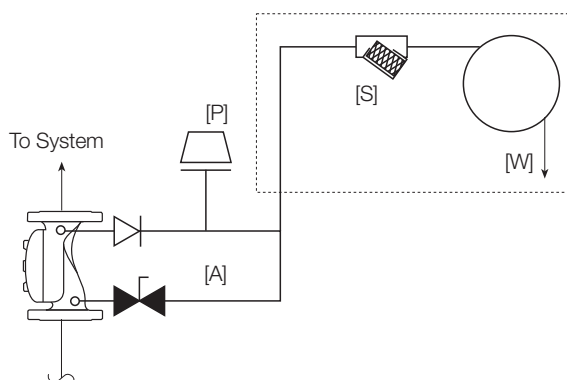
- The package also includes the required 3/4" (20 mm) NPT strainer for installation on the alarm line.

Design Requirements:

- Locate the Water Motor Alarm on an exterior wall as close as practical to the valve being monitored for water flow. A strainer (3/4", included in package) is required on the alarm line. The location must be easily accessible for cleaning.
- The alarm line pipe must be 20ND (3/4") in size with 22.8m (75ft) maximum total length of pipe with minimum number of fittings. If the length of the pipe exceeds 22.8m (75ft), then a larger pipe size must be used to reduce hydraulic friction loss. The sprinkler alarm should not be located more than 1.8m (6ft) above alarm valve.



	mm	inch
A	57	2 ¹ / ₄
B	70	2 ³ / ₄
H	233	9
L1	41	1 ⁵ / ₄
L2	71	2 ³ / ₄
L3	89	3 ¹ / ₂



Major Items:

- [A] Valve Trim Accessories
- [P] Pressure Switch
- [S] Strainer
- [W] Water Motor Alarm



bermadfire@bermad.com • www.bermad.com

The information herein is subject to change without notice. BERMAD shall not be held liable for any errors. All rights reserved. © Copyright by BERMAD. PCGPE75 04