

# Pressure Reducing Valve

Normally Closed with Hydraulic Control  
for Drip-Tape Applications

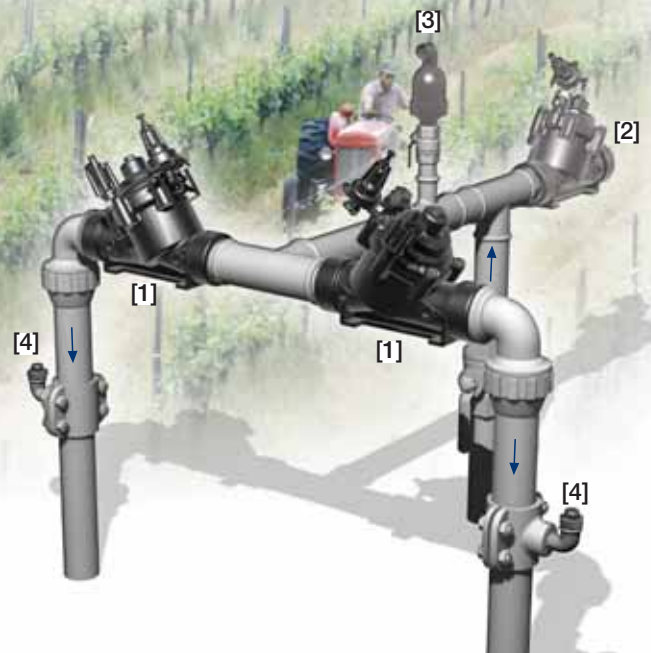
IR-120-54-b

The BERMAD Model IR-120-54-b is a hydraulically operated, diaphragm actuated control valve that accurately reduces higher upstream pressure to very low and stable preset downstream pressure regardless of fluctuating demand or varying upstream pressure. It is a Normally Closed valve that opens in response to a remote pressure drop command and shuts in the absence of that command.



## Features and Benefits

- Line Pressure Driven Normally Closed
  - Closes upon control failure
  - Amplifies and relays weak remote command
- Pressure Reducing Servo Pilot Controlled
  - Dynamic integrated needle valve
  - Settable to 0.5 bar; 7 psi
  - Very low hysteresis
- Engineered Plastic Valve with Industrial Grade Design
  - Highly durable, chemical and cavitation resistant
  - No internal bolts and nuts
- hYflow 'Y' Valve Body with "Look Through" Design
  - Ultra-high flow capacity – Low pressure loss
- Unitized Flexible Super Travel (FST) Diaphragm and Guided Plug
  - Accurate and stable regulation with smooth closing
  - Requires low opening and actuation pressure
  - Prevents diaphragm erosion and distortion

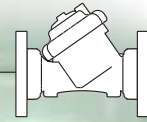


## Typical Applications

- Computerized Irrigation Systems
- Drip-Tape Systems
- Low Set Pressure Applications
- Remote and/or Elevated Plots
- Distribution Centers
- Low Supplied Pressure Irrigation Systems
- Energy Saving Irrigation Systems

- [1] BERMAD Model IR-120-54-b opens upon pressure rise command, and establishes reduced pressure zone protecting laterals and distribution line.
- [2] BERMAD Relief Valve Model IR-13Q
- [3] BERMAD Air Valve Model ARA-A-P-P
- [4] BERMAD Vacuum Breaker Model 1/2"-ARV

# BERMAD Irrigation



## IR-I20-54-b

For full technical details, refer to Engineering Section.

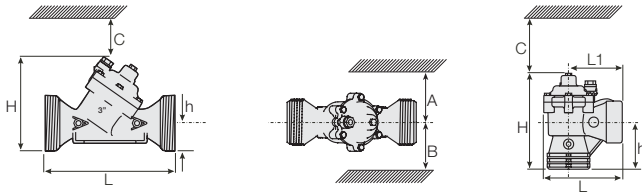
## 100 Series hYflow Pressure Reducing Drip-Tape

### Technical Specifications

#### Dimensions and Weights

Pattern Size	Angle DN Inch	Y (Oblique)				
		80-T 3-T	50-T 2-T	65-T* 2 1/2-T*	80-T 3-T	80L-T 3L-T
L (L1)	mm	187 (130)	230	230	298	300
	inch	7.4 (5.1)	9.1	9.1	11.7	11.8
H (Hf)	mm	235 (245)	170 (185)	170 (185)	180 (195)	240
	inch	9.3 (9.6)	6.7 (7.3)	6.7 (7.3)	7.1 (7.7)	9.5
C	mm	53	140	140	140	180
	inch	2.1	6	6	6	8
h	mm	117	40	40	50	60
	inch	4.6	1.6	1.6	2.0	2.4
A; B	mm	320	135	135	190	190
	inch	12.6	6	6	8	8
Weight	Kg	1.6	1.35	1.4	1.6	3.0
	lb.	3.5	3.0	3.1	3.5	6.6

\* 2 1/2"; DN65 Male Thread BSP-F, for PVC glue Unions.



### Technical Data

#### Valve Configurations & Size:

Oblique: 2, 2 1/2, 3, 3L, 4 & 6"; DN50, 65, 80, 80L, 100 & 150

Angle: 3"; DN80

#### End Connections:

Threaded: 2, 2 1/2, 3 & 3"L; DN50, 65, 80 & 80L

Flanged: 3, 3L, 4, & 6"; DN80, 80L, 100 & 150

Grooved: 6"; DN150 Pressure Rating: 10 bar; 145 psi

**Operating Pressure Range:** 0.35-10 bar; 5-145 psi

**Setting Range:** 0.5-1.7 bar; 7-25 psi

Setting ranges vary according to specific pilot spring. Please consult factory.

#### Materials:

**Body, Cover and Plug:** Glass-Filled Nylon

**Diaphragm:** NR, Nylon Fabric Reinforced

**Seals:** NR

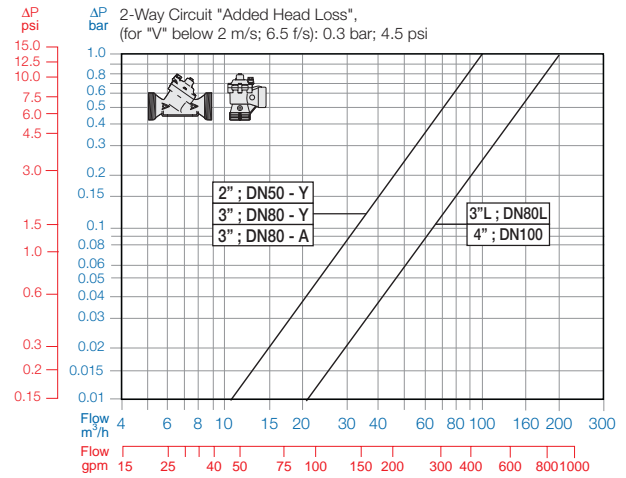
**Spring:** Stainless Steel

**Cover Bolts:** Stainless Steel

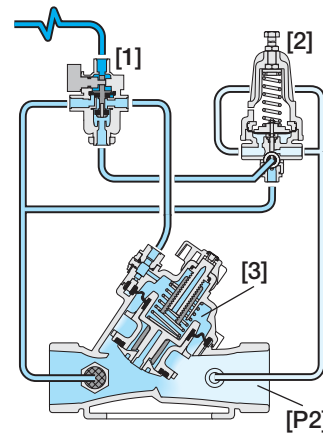
**Control Accessories:** Plastic

**Tubing and Fittings:** Plastic

### Flow Chart



### Operation



The 3-Way Hydraulic Relay Valve (3W-HRV) [1] hydraulically connects the Pressure Reducing Servo Pilot (PRSP) [2] to the Valve Control Chamber [3]. The PRSP commands the Valve to throttle closed, preventing Downstream Pressure [P2] from rising above pilot setting. The 3W-HRV switches upon pressure drop command, directing line pressure into the control chamber, and thereby causing the main Valve to shut. The 3W-HRV also features local manual closing.

### How to Order

Please specify the requested valve in the following sequence: (for more options, refer to Ordering Guide.)

Sector	Size	Primary Feature	Additional Feature	Pattern	Construction Materials	End Connections	Control Type	Voltage -Main Valve Position	Additional Attributes
IR	2-4" <small>Other sizes available on request.</small>	120	54	Y	P	BP	2W/3W	-	b
	Oblique Angle (3"; DN 80 Only)		Y A	BSP BSP-F (Male Threads 2 1/2"; DN65 only) NPT Plastic Flanges* Metal Flanges* ("Corona")		BP BS NP FF CC	Servo Flow Stem Flow Stem with Position Indicator Other attributes available on request		b M MP

Comply to: ISO PN10, ANSI #125/150, Jis K-10, BS-D



info@bermad.com • www.bermad.com

The information herein is subject to change without notice. BERMAD shall not be held liable for any errors. All rights reserved. © Copyright by BERMAD.

PC1AE20-54b 05