

Pressure Reducing Pilot Valve

Model FP#2-UL

This pilot valve integrates all the principal functions of a two-way control circuit into a single assembly. It is a direct acting valve, actuated by a pressure responsive diaphragm, which tends to reach equilibrium with the set spring force. When used in a pressure reducing circuit, the pilot valve modulates to close as downstream pressure rises above set point. An integral needle valve acts as an upstream flow restrictor as well as a closing speed control.

Features

- Integral needle valve
- Internal pressure sensing

Typical Applications

- Pressure reducing valves

Approvals

- UL listed and FM approved when installed on BERMAD listed or approved valve configurations

Technical Data

- Pressure Rating: 40 bar (600 psi)
- Working Temperature: Water up to 80°C (180°F)
- Flow Factor: Kv 1.0 (Cv 1.2)

Standard Materials

- Body & cover: Brass
- Elastomers: NBR (Buna N)
- Internals: Stainless Steel & Brass
- Spring: Galvanized Steel

Optional Materials

- All Stainless Steel 316, CF8M Body
- Nickel Aluminum Bronze ASTM B148
- Super Duplex 25Cr

Adjustment Range

Spring	Pressure		Standard
	bar	psi	
16	2-12	30-175	

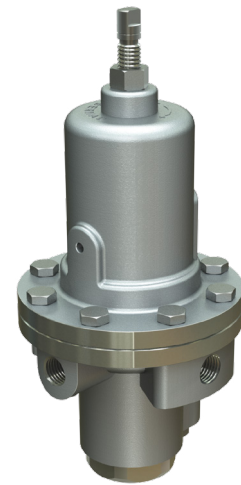
Connections

Z - Upstream

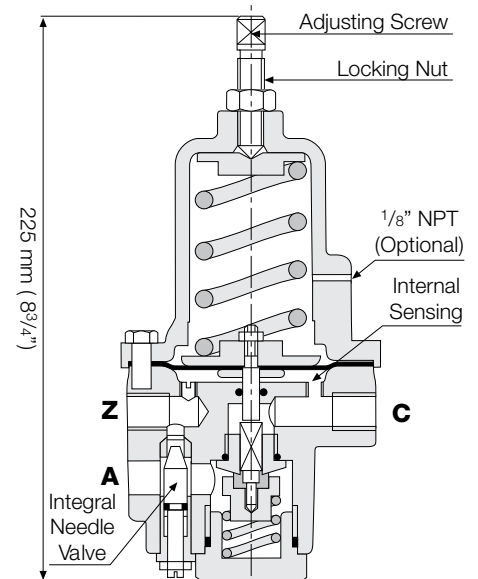
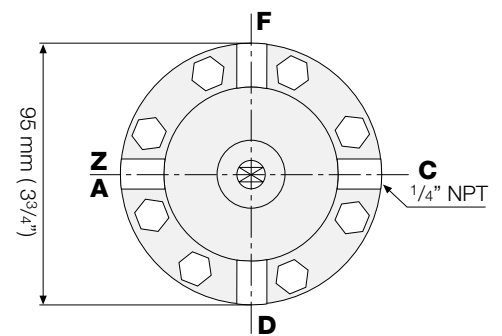
A - Valve control chamber

C - Downstream

F/D - External sensing/pressure gauge



(for Illustration Only)



Weight: 2.7 Kg (6 lbs.)