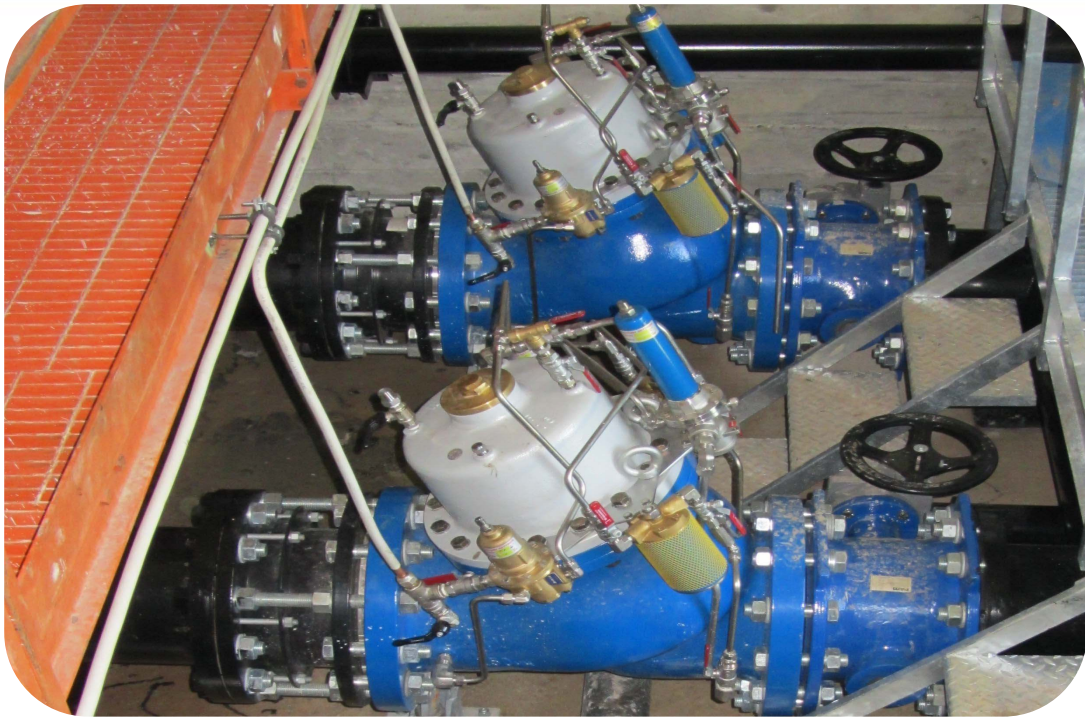


SPONDA SOLIVA - RESERVOIR RONCOLA



Project Name	SPONDA SOLIVA RESERVOIR RONCOLA
Country	ITALY
Segment	WATERWORKS
Application	LEVEL & FLOW CONTROL VALVE- MODULATING VERTICAL FLOAT ENCLOSING SURGE PREVENTION RELIEF OVERRIDE & PRESSURE REDUCING
Bermad Solution	3 UNITS OF WW-10"-857-67-PA-C2—49-3Q-Y-C-25- EB-NN-FSU 1 UNIT OF WD-16"-720-ES-Y-C-16-EB-NN-NVI-6 1 UNIT OF WD-12"-720-ES-Y-C-16-EB-NN-NVI-6
Optional Text	C2 SUPER CAVITATION CAGE IN AISI 304 AND 304 LEVEL FLOAT IN AISI