

## 3/2 Solenoid Valve

### Direct Acting – Plunger Actuated

This solenoid valve is direct-acting 3/2 (can also be used as 2/2) plunger actuated solenoid valve. It has a compact construction and is suitable for controlling BERMAD's hydraulic control valves using water or air. This solenoid valve does not require a minimum operating pressure and is not affected by the mounting position. Its construction also provides long life and durability. The epoxy encapsulation efficiently dissipates heat, to suit continuous duty applications

### Features

- Short response time
- Compact design
- Wide pressure range
- Normally open or closed version



### Technical Data

#### Standard materials:

**Body:** Stainless steel 316

**Elastomers:** FPM (Viton®)

**Enclosure:** Molded epoxy

**Internals:** Stainless steel

**Ports:** 1/4", 1/8" NPT

#### Temperature:

**Nominal ambient:** 0.5 to 55°C (33 to 131°F)<sup>(1)</sup>

**Maximum fluid:** 0 to 90°C (32 to 194°F)

#### Enclosure type:

One-piece molded epoxy.

General purpose: IP 65 with DIN, cable plug

#### Electrical data:

##### Voltages:

(ac): 24, 110, 220 (50Hz)

(ac): 24, 120, 240 (60Hz)

(dc): 24

Tolerance: +/-10%

##### Power consumption:

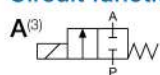
(ac): 21 VA, inrush; 14 VA (8W), holding

(dc): 8W

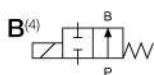
#### Hydraulic data:

Orifice DN <sup>(2)</sup>	Pressure Range		
	mm	Bar	psi
0.8	0-40	0-580	
1.0	0-30	0-435	

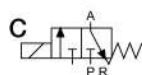
#### Circuit functions



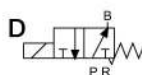
2/2-way  
Normally Closed



2/2-way  
Normally Open



3/2-way  
Normally Closed



3/2-way  
Normally Open

#### Notes:

(1) Max ambient temperature is determined under continuously energized conditions, and with max. fluid temperature.

(2) Required filtration – 500 micron.

(3) 311A or 311C (R port is plugged)

(4) 311B or 311D (R port is plugged)

