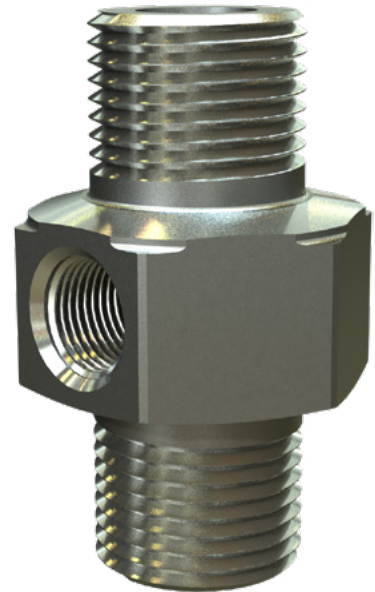


Priming Restriction

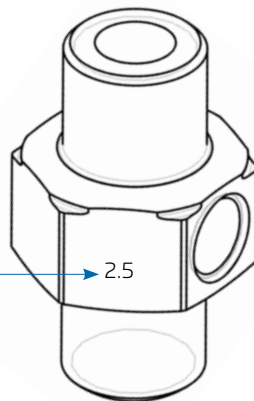
The Priming Restriction is a flow restriction component used as an integral orifice in the control trim of BERMAD Deluge Valves.

In addition it incorporates two 1/4" NPT (F) ports to enable a priming pressure connection to supplementary instruments like a solenoid or relay valve.

The internal restriction orifice is available in a number of diameters, each suited to a particular valve/pilot size.



Notching on the corners of the hexagonal indicate on which side of the priming restriction the restriction orifice is located – See section drawing below



The diameter (mm) of the restriction orifice is shown on a face of the hexagonal

Available Materials

- Stainless Steel 316 (standard)
- Nickel Aluminum Bronze
- Monel
- Duplex

Technical Data

Pressure Rating: 25 bar 365 psi

Connections: Inlet & Outlet - 1/2" NPT (M)
Side Ports - 1/4" NPT (F)

