

## Pressure Relief/Sustaining Valve

with Hydraulic Control

IR-130-50

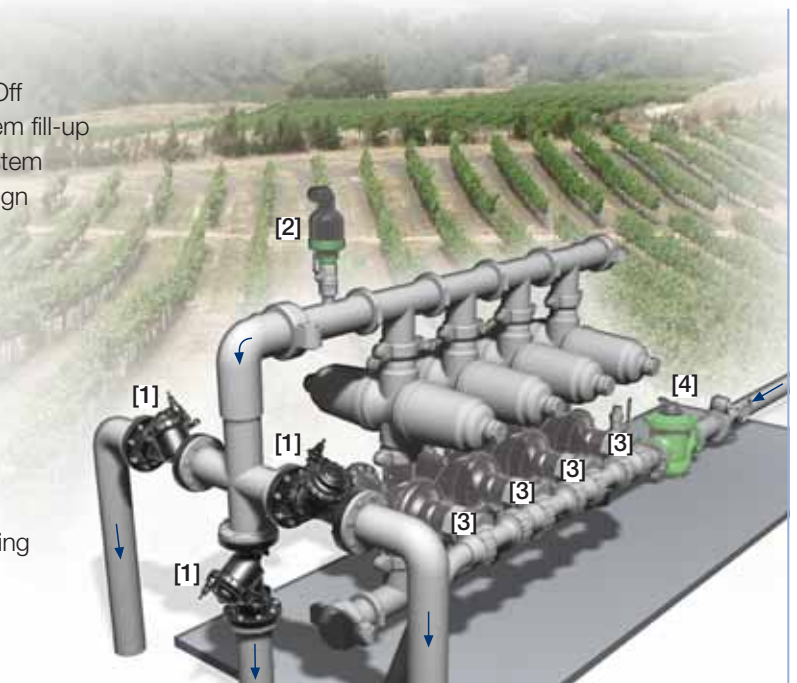
The BERMAD Pressure Relief/Sustaining Valve with Hydraulic Control is a hydraulically operated, diaphragm actuated control valve that sustains minimum preset upstream (back) pressure. It either opens or shuts in response to a remote pressure command.

When installed offline, the BERMAD Model IR-130-50 relieves line pressure in excess of preset pressure.



### Features and Benefits

- Line Pressure Driven, Hydraulically Controlled On/Off
  - Sustains upstream line pressure controlling system fill-up
  - Relieves excess pressure protecting pump & system
- Engineered Plastic Valve with Industrial Grade Design
  - Adaptable on-site to a wide range of end connection sizes and types
  - Articulated flange connections eliminate mechanical and hydraulic stresses
  - Highly durable, chemical and cavitation resistant
- hYflow 'Y' Valve Body with "Look Through" Design
  - Ultra-high flow capacity – Low pressure loss
- Unitized Flexible Super Travel (FST) Diaphragm and Guided Plug
  - Accurate and stable regulation with smooth closing
  - Requires low opening and actuation pressure
  - Prevents diaphragm erosion and distortion
- Simple In-Line Inspection and Service

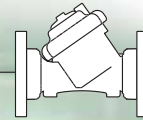


### Typical Applications

- Computerized Irrigation Systems
- Pressure Zone Prioritizing
- Line Fill-up Control
- Line Emptying Prevention
- Filter Stations
- Energy Saving Irrigation Systems

- [1] BERMAD Model IR-130-50 opens upon pressure drop command, sustains filters back flush pressure and controls system fill-up.
- [2] BERMAD Air Valve Model ARC-A-P-I
- [3] BERMAD Backwash Flushing Valve Model IR-3x3-350-S-P
- [4] BERMAD N.C. Hydrometer Model IR-900-M0-54-R

# BERMAD Irrigation



## IR-130-50

For full technical details, refer to Engineering Section.

## 100 Series hYflow

Pressure Sustaining

### Technical Specifications

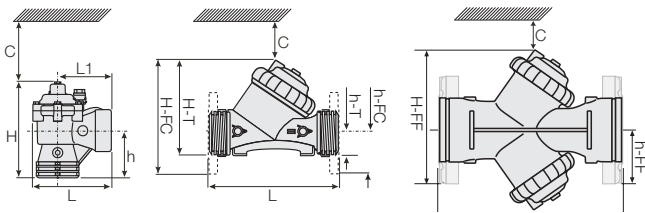
#### Dimensions and Weights

Pattern Size	DN Inch	Angle		Y (Oblique)			Y "Boxer"
		80-T <sup>(1)</sup> 3-T <sup>(1)</sup>	80-T <sup>(1)</sup> 3-T <sup>(1)</sup>	80-FC <sup>(2)</sup> 3-FC <sup>(2)</sup>	80L-FC <sup>(2)</sup> 3L-FC <sup>(2)</sup>	100-FC <sup>(2)</sup> 4-FC <sup>(2)</sup>	150-FF <sup>(3)</sup> 6-FF <sup>(3)</sup>
L (L1)	mm	187 (130)	298	308	310	350	480
	inch	7.4 (5.1)	11.7	12.1	12.2	13.8	18.9
H (Hf)	mm	235 (245)	180 (195)	240 (255)	280	294	285
	inch	9.3 (9.6)	7.1 (7.7)	9.4 (10)	11	11.6	11.2
C	mm	53	53	600	600	600	600
	inch	2.1	2.1	4	4	23.6	23.6
h	mm	117	50	100	100	112	145
	inch	4.6	2	3.9	3.9	4.4	5.7
Weight	Kg	1.6	1.6	4.4	5.9	7.6	12.5
	lb.	3.5	3.5	9.7	13	16.7	27.6

(1) "T" = Threaded end connections

(2) "FC" = Flanged, Corona (Metal) end connections

(3) "FF" = Flanged, Universal Plastic end connections



### Technical Data

**Sizes:** 3, 3L, 4 & 6"; DN80, 80L, 100 & 150

**Patterns:**

Oblique: 3, 3L, 4 & 6"; DN80, 80L, 100 & 150

Angle: 3"; DN80

**End Connections:**

Threaded: 3 & 3"L; DN80 & 80L

Flanged: 3, 3L, 4 & 6"; DN80, 80L, 100 & 150

**Pressure Rating:** 10 bar; 145 psi

**Operating Pressure Range:** 0.35-10 bar; 5-145 psi

**Setting Range:** 1-7 bar; 15-100 psi

Setting ranges vary according to specific pilot spring. Please consult factory.

**Materials:**

**Body, Cover and Plug:** Glass-Filled Nylon

**Diaphragm:** NR, Nylon fabric reinforced

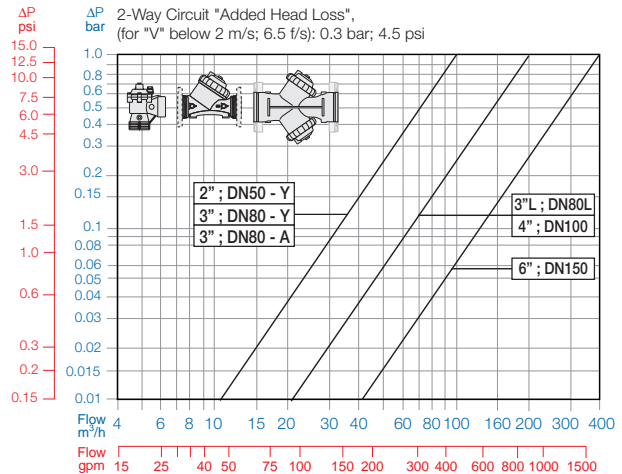
**Seals:** NR

**Spring:** Stainless Steel

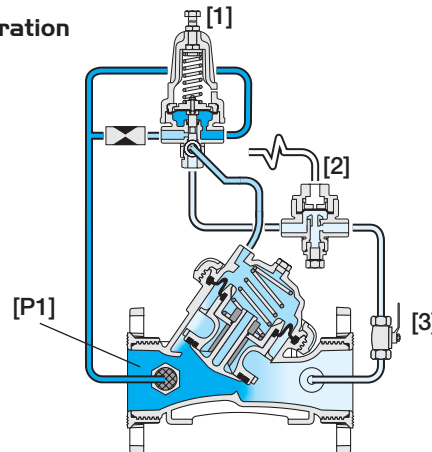
**Control Accessories:** Plastic

**Tubing and Fittings:** Plastic

### Flow Chart



### Operation



The Pressure Sustaining Pilot [1] commands the Valve to throttle closed should Upstream Pressure [P1] drop below pilot setting, and to modulate open when it rises above pilot setting. The Hydraulic Relay Valve [2] closes upon pressure rise command, shutting the main Valve. The downstream Cock Valve [3] enables manual closing.

### How to Order

Please specify the requested valve in the following sequence: (for more options, refer to Ordering Guide.)

Sector	Size	Primary Feature	Additional Feature	Pattern	Construction Materials	End Connections	Control Type	Voltage -Main Valve Position	Additional Attributes
IR	3-6"	130	50	Y	P	FF	2W	-	-
	Other sizes available on request.	Oblique Angle (3"; DN80 Only)	Y A	Threaded BSP (Female) Threaded NPT (Female) Plastic Flanges* Metal Flanges* ("Corona") Grooved (6"; DN150 Only)	BP NP FF CC VI	Low Preset Pressure (below 2 bar) Plastic Pressure Test Point	2 5	Other attributes available on request	

\* Comply to: ISO PN10, ANSI #125/150, Jis K-10, BS-D



info@bermad.com • www.bermad.com

The information herein is subject to change without notice. BERMAD shall not be held liable for any errors. All rights reserved. © Copyright by BERMAD. PC1AE30-50 05