

## Surge Anticipating Control Valve

### with Solenoid Control

- Eliminates surge in all pumping systems:
  - Booster & deep well, single & variable speed
- Eliminates surge in all distribution networks:
  - Municipal, high-rise buildings, sewage, HVAC, irrigation
  - Difficult to maintain, remote locations, older systems

The Model 735-55-M Surge Anticipating Valve with Solenoid Control is an off-line, hydraulically operated, diaphragm actuated valve. The valve immediately opens in direct response to any power failure even prior to the pressure drop associated with abrupt pump stoppage. The pre-opened valve dissipates the returning high pressure wave, eliminating the surge. The Model 735-55-M, sensing line pressure, smoothly closes drip-tight as quickly as the relief feature allows, while preventing closing surge. The valve also relieves excessive system pressure.



### Features and Benefits

- **Replaces surge air vessels**
  - Relieves surge, fail-safe open
  - Minimal maintenance
  - Economy of space
  - Lower investment and maintenance costs
  - Especially economic for higher pressure ratings
- **Solenoid controlled**
  - Low cost wiring
  - Wide range of pressures
- **Line pressure driven**
  - No motor required
  - Adjustable hydraulic actuation
- **Double chamber**
  - Moderated valve closing (no surges)
  - Protected diaphragm
- **In-line serviceable** – Easy maintenance
- **Obstacle free, full bore** – Uncompromising reliability
- **Balanced seal disk** – High flow capacity

### Major Additional Features

- Sensing diaphragm (for sewage) – **735-55-Md**
- Hydraulic Override – **735-55-09-M**
- Electric override for fire protection – **FP-730-59**
- Electrically selected multi-level settings – **735-45-M**
- Quick pressure relief valve – **73Q**

See relevant BERMAD publications.

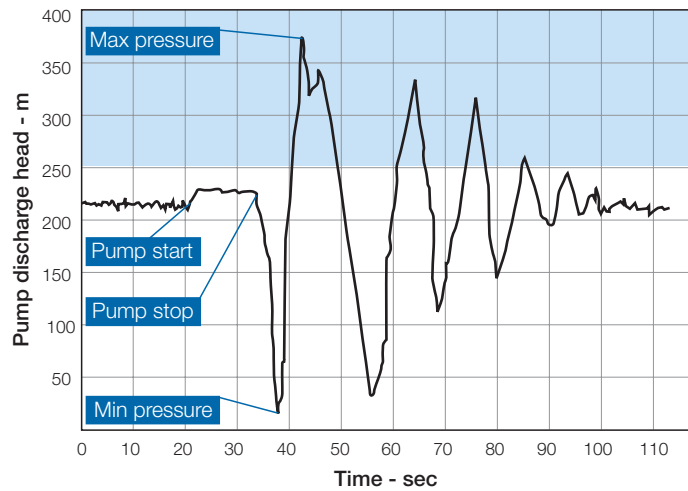


## Operation

The abrupt stopping of a pump produces a pressure drop as the traveling column of water, with its inherent momentum, continues to travel along the line, generating severe low pressure.

When the traveling column of water loses its momentum, it travels back towards the pump. Should it hit the closed check valve, a very high pressure surge is created and travels throughout the system as a damaging wave at velocities of up to "Mach 4". No quick relief valve can react quickly enough to eliminate it.

**Surge at Pump Station Without Protection**



Eliminating surge requires anticipation and pre-action. The Model 735-55-M is well suited to this task.

The N.C. solenoid [1] is energized by the UPS Controller immediately upon power failure, which allows the remaining line pressure to quickly open the main valve prior to the anticipated pressure drop.

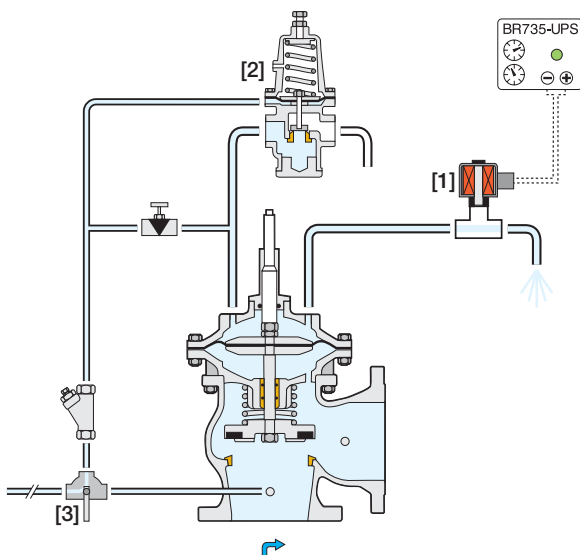
The already opened Model 735-55-M releases the returning column of water, minimizing the line pressure rise. Should the relief rate be insufficient and the pressure exceed the High Pressure (HP) pilot [2] setting, the pilot immediately opens, further opening the main valve.

After a pre-set delay, the UPS Controller de-energizes the solenoid, closing it. As system pressure stabilizes again at static pressure, the HP pilot closes and the main valve begins closing. Should line pressure rise during main valve closing, the HP pilot briefly stops the process, preventing the pressure from continuing to rise.

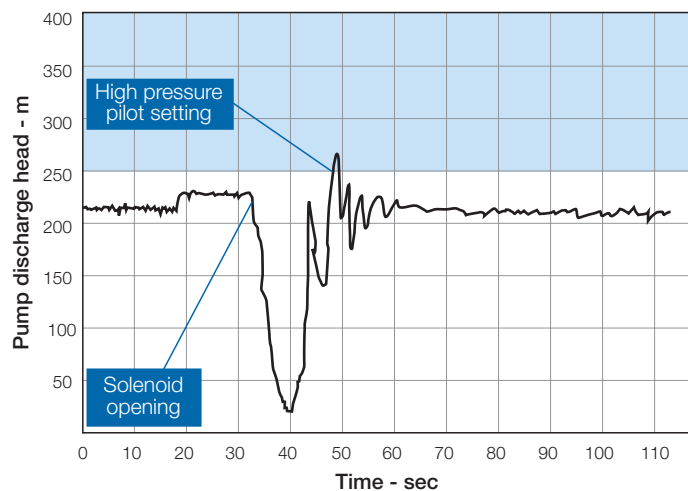
The flow stem [3] limits the relief flow to prevent column separation and preserve closing pressure.

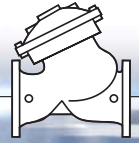
Cock valve [3] serves for selecting operating and sensing source:

- Directly from main discharge line - Recommended (see "Typical Application")
- From Model 735-M inlet



**Pressure at Pump Station Protected by Model 735-M**





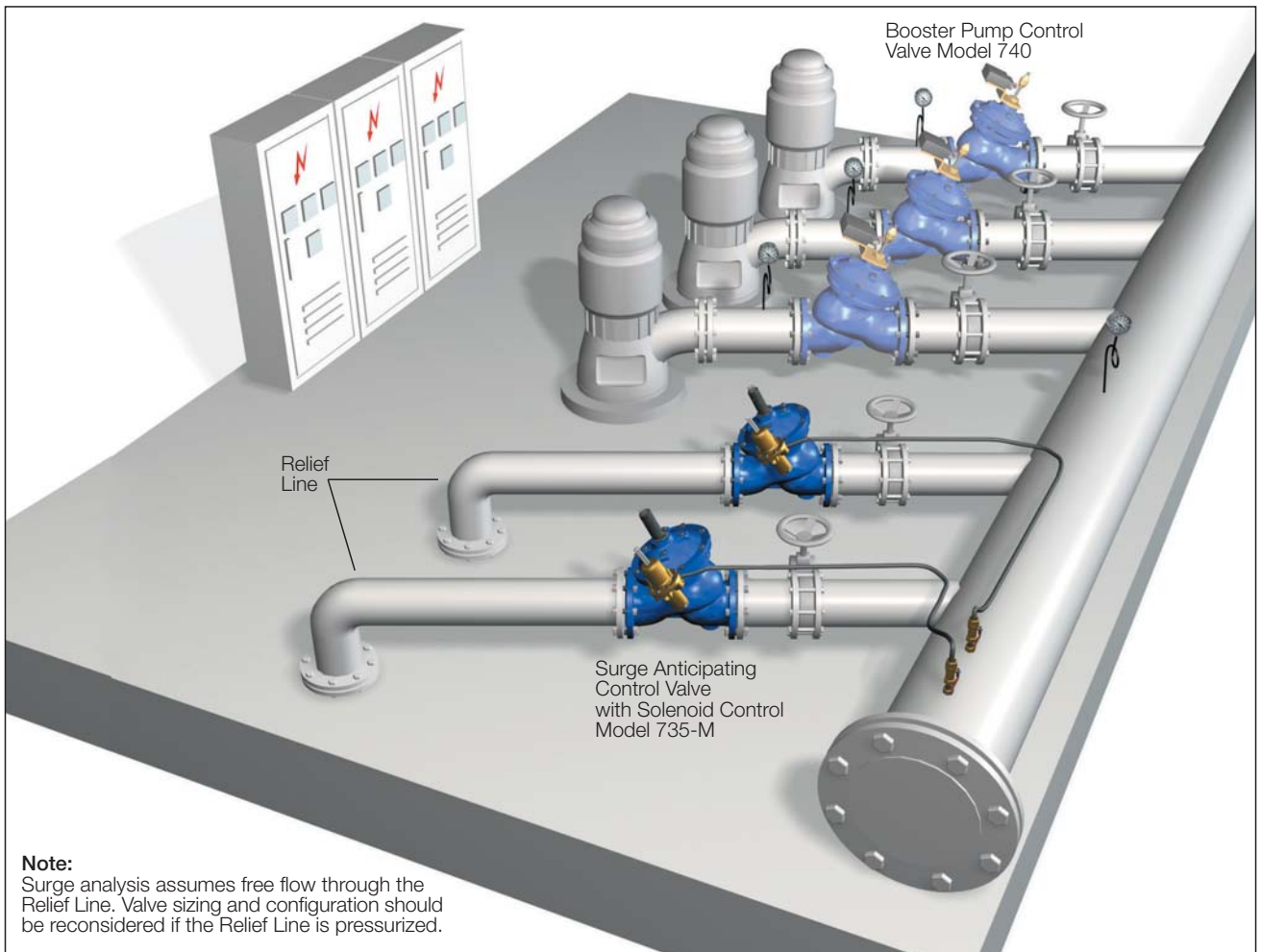
## Typical Applications

In this system, a pump battery supplies the main line through a manifold. The Model 735-55-M:

- Eliminates surge upon power failure
- Provides surge free switching between “on-duty” pumps
- Closes smoothly according to pilot setting

The solenoid control is especially advantageous when:

- Static pressure is lower than 3 bar (45 psi)
- Discharge line is short and wave critical time is less than 3 seconds
- Electric control is preferred due to maintenance considerations



## BR 735-UPS Controller

As the Model 735-55-M Surge Anticipating Valve with Solenoid Control remains closed except in the event of power failure, it requires a Normally Open (N.O.) always energized solenoid, which is vulnerable to problems (coil heating, sticking problems, calcium build-up, etc.). The recommended alternative is using a combination of a Normally Closed (N.C.) de-energized solenoid, and an **Un-Interruptible Power Source (UPS)**. The BR-735-UPS Controller, includes two re-chargeable lithium batteries and a settable timer for determining the period that the valve remains open. The Controller, as a part of the pump control panel, immediately energizes the N.C. solenoid to open the valve for a pre-set time after which it de-energizes the solenoid, allowing the Model 735-55-M to start closing.





## Bermad Surge Analysis Program – “BERSAP II”

Surge is the result of many factors: designed flow rate, pumping system, main line characteristics, etc. By using advanced mathematics and computer software, BERMAD’s experienced engineers can perform the desired analysis. For best analysis, all of the following data is required.

- Main Line
  - Line Profile (Chainage), elevations at accumulated length
  - Internal diameter
  - Length
  - Material
  - Wall thickness
- Pumps
  - Pump curve(s)
  - Max. number of pumps in simultaneous operation
  - Type of non-return valve
- System
  - Max. designed flow rate
  - Max. & min. levels at suction and at delivery reservoirs

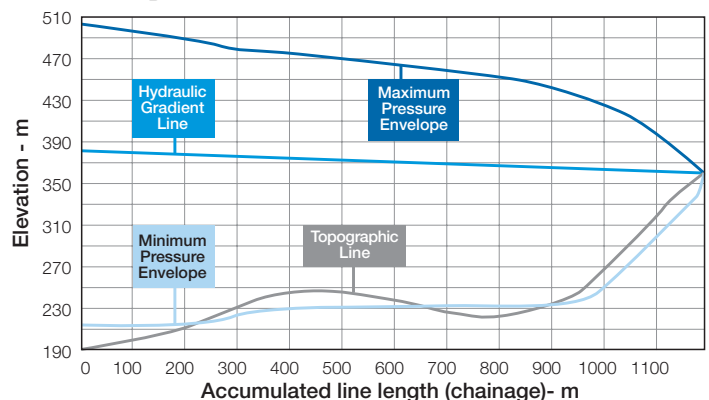
For systems with multiple pumping stations and/or multiple consumers along the supply line, the following data is also required:

- System layout including pumping station and consumer locations and characteristics
- Head Gradient Line (HGL) for each and every node based on “Network-Solver” analysis

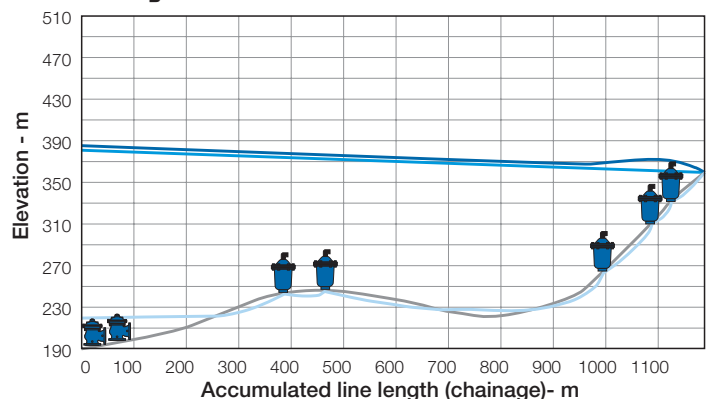
This surge analysis indicates that without protection the system is exposed to:

- Pressure of ~32 bar (see max. pressure envelope line)
- Vacuum conditions (see min. pressure envelope line)

**Line Hydraulic Behavior without Protection**



**Line Hydraulic Behavior with Full Protection**



Simulated surge protection recommends:

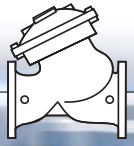
- Two Model 735-55-M Valves installed in parallel at the pumping station
- Five Non-Slam Air Valves installed along the line

With full surge protection, the simulation shows no surge and minimal vacuum.

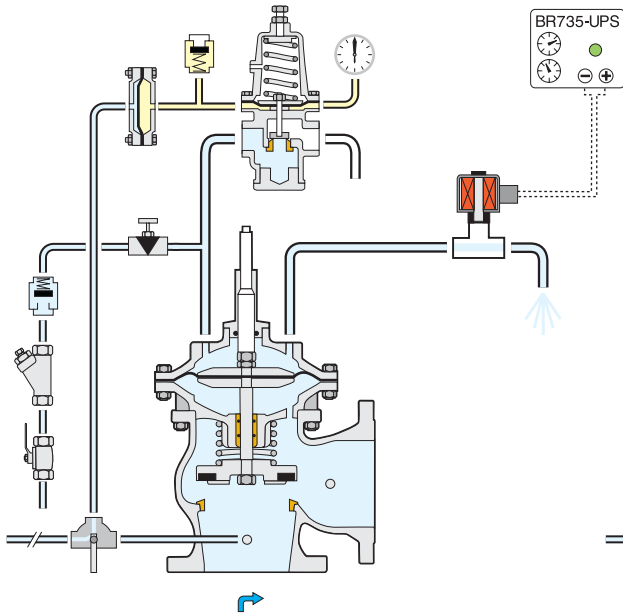
- Pressure at max. of ~19 bar (see max. pressure envelope line)
- No appreciable vacuum (see min. pressure envelope line)

Any pipeline design requires air valves to admit air under vacuum conditions and to release air under pressure. The size, type and location of these air valves should consider surge protection requirements.

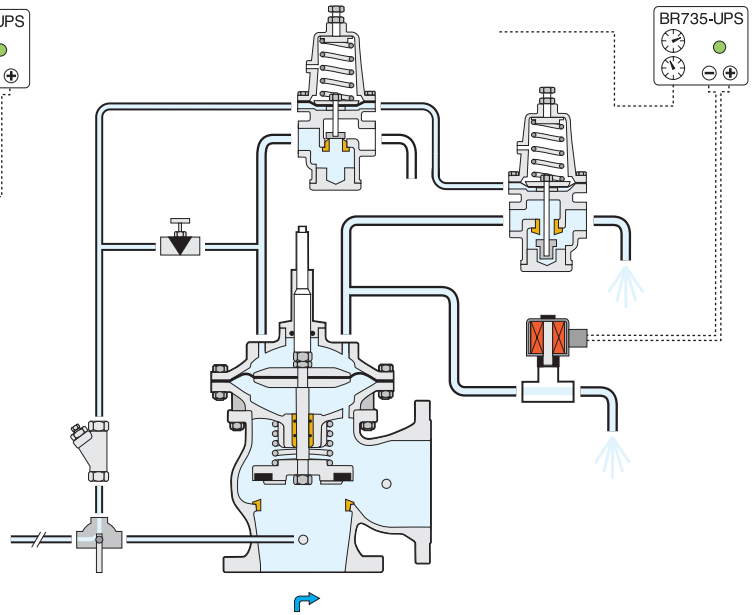




## Additional Applications



Surge Anticipating Valve with Sensing Diaphragm  
Model 735-55-Md  
for Sewage Water



Surge Anticipating Valve with Hydraulic Override  
Model 735-55-09-M  
for Opening BackUp

## Engineer Specifications

The Surge Anticipating Valve shall open in direct response to any power failure even prior to the pressure drop associated with abrupt pump stoppage. The pre-opened valve shall dissipate the returning high pressure wave, eliminating the surge. It shall smoothly close drip tight as quickly as the relief feature allows, while preventing closing surge. The valve shall also relieve excessive system pressure.

**Main Valve:** The main valve shall be a center guided, diaphragm actuated globe valve of either oblique (Y) or angle pattern design. The body shall have a replaceable, raised, stainless steel seat ring. The valve shall have an unobstructed flow path, with no stem guides, bearings, or supporting ribs. The body and cover shall be ductile iron. All external bolts, nuts, and studs shall be Duplex® coated. All valve components shall be accessible and serviceable without removing the valve from the pipeline.

**Actuator:** The actuator assembly shall be double chambered with an inherent separating partition between the lower surface of the diaphragm and the main valve. The entire actuator assembly (seal disk to top cover) shall be removable from the valve as an integral unit. The stainless steel valve shaft shall be center guided by a bearing in the separating partition. The replaceable radial seal disk shall include a resilient seal and shall be capable of accepting a V-Port Throttling Plug by bolting.

**Control System:** The control system shall consist of a 2-Way adjustable pilot, a 2-Way Normally Closed DC solenoid, a needle valve, a flow stem, a cock valve, and a filter. All fittings shall be forged brass or stainless steel. The assembled valve shall be hydraulically tested.

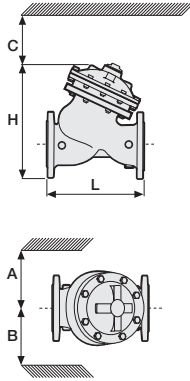
**Quality Assurance:** The valve manufacturer shall be certified according to the ISO 9001 Quality Assurance Standard. The main valve shall be certified as a complete drinking water valve according to NSF, WRAS, and other recognized standards.



### Technical Data

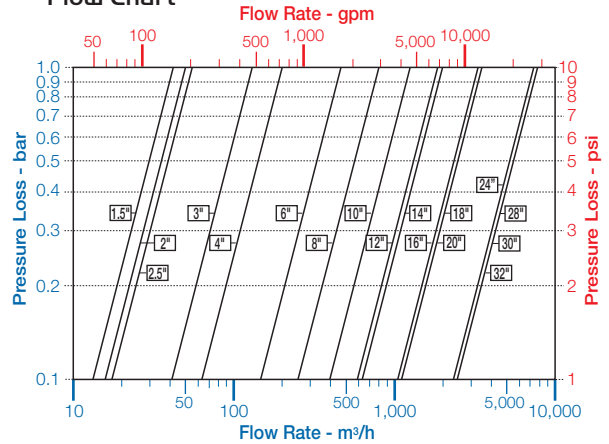
#### Dimensions and Weights

Size	A, B	C	L	H	Weight
mm inch	mm inch	mm inch	mm inch	mm inch	kg lbs
40 1 1/2"	350 14	180 7	205 8.1	239 9.4	9.1 20
50 2"	350 14	180 7	210 8.3	244 9.6	10.6 23
65 2 1/2"	350 14	180 7	222 8.7	257 10.1	13 29
80 3"	370 15	230 9	250 9.8	305 12.0	22 49
100 4"	395 16	275 11	320 12.6	366 14.4	37 82
150 6"	430 17	385 15	415 16.3	492 19.4	75 165
200 8"	475 19	460 18	500 19.7	584 23.0	125 276
250 10"	520 21	580 23	605 23.8	724 28.5	217 478
300 12"	545 22	685 27	725 28.5	840 33.1	370 816
350 14"	545 22	685 27	733 28.9	866 34.1	381 840
400 16"	645 26	965 38	990 39.0	1108 43.6	846 1865
450 18"	645 26	965 38	1000 39.4	1127 44.4	945 2083
500 20"	645 26	965 38	1100 43.3	1167 45.9	962 2121



Data is for Y-pattern, flanged, PN16 valves  
 Weight is for PN16 basic valves  
 "C" enables removing the actuator in one unit  
 "L", ISO standard lengths available  
 For more dimensions and weights tables, refer to Engineering Section

#### Flow Chart



Data is for Y-pattern, flat disk valves  
 For more flow charts, refer to Engineering Section

#### Main Valve

**Valve Patterns:** "Y" (globe) & angle  
**Size Range:** 1 1/2"-32" (40-800 mm)  
**End Connections (Pressure Ratings):**  
**Flanged:** ISO PN16, PN25 (ANSI Class 150, 300)  
**Threaded:** BSP or NPT  
**Others:** Available on request  
**Working Temperature:**  
 Water up to 80°C (180°F)  
**Standard Materials:**  
**Body & Actuator:** Ductile Iron  
**Internals:**  
 Stainless Steel, Bronze & coated Steel  
**Diaphragm:**  
 NBR Nylon fabric-reinforced  
**Seals:** NBR  
**Coating:**  
 Fusion Bonded Epoxy, RAL 5005 (Blue)  
 NSF & WRAS approved or Electrostatic Polyester Powder, RAL 6017 (Green)

#### Control System

**Standard Materials:**  
**Accessories:**  
 Bronze, Brass, Stainless Steel & NBR  
**Tubing:** Copper or Stainless Steel  
**Fittings:** Forged Brass or Stainless Steel  
**Pilot Standard Materials:**  
**Body:** Brass, Bronze or Stainless Steel  
**Elastomers:** NBR  
**Springs:** Galvanized Steel or Stainless Steel  
**Internals:** Stainless Steel  
**Solenoid Standard Materials:**  
**Body:** Brass or Stainless Steel  
**Elastomers:** NBR or FPM  
**Enclosure:** Molded epoxy  
**Solenoid Electrical Data:**  
**Voltages:**  
 (dc): 24  
**Power Consumption:**  
 (dc): 8-11.6W  
 Values might vary according to specific solenoid model

#### Pilot Valve Selection

Valve Size	Pilot Setting (bar)	Pilot Type		
		#3	#3HC	#3+Ac
1 1/2 - 4"	<15	■		
40 - 100 mm	>15	●		
6 - 14"	<15		■	
150 - 350 mm	>15		●	
16 - 32"	<15			■
400-800 mm	>15			●

■ Standard model ● with high pressure setting kit  
 Ac-Accelerated Openig valve

**BR 735-UPS Controller**  
**Supply voltage:** 110, 230 V(ac) 50/60 Hz  
**Self power consumption:** 6VA  
**Batteries:** Two 12V, 4AH, rechargeable type  
**Protection class:** IP54  
**Operating temperature:** 10-50°C (50-125°F)  
**Dimensions (mm):** H-211, W-240 & D-116  
 System is capable of energizing up to two 24V(dc) 12W solenoids

### How to Order

Please specify the requested valve in the following sequence: (for more options, refer to Ordering Guide)

Sector	Size	Primary Feature	Additional Feature	Pattern	Body Material	End Connections	Coating	Voltage & Position	Tubing & Fittings	Additional Attributes
WW	6"	735	55	Y	C	16	EB	4DC	CB	FM
Waterworks	1 1/2 - 32"	Surge Anticipating Control		Oblique (up to 20") Y Angle (up to 18") A Globe (24-32" only) G	Ductile Iron Standard C Cast Steel S St. Steel 316 N Nickel Alumin. Bronze U	Epoxy FB Blue Polyester Green Polyester Blue Uncoated	EB PG PB UC	Copper Tubing & Brass Fittings Plastic Tubing & Brass Fittings St. St. 316 Tubing & Fittings	CB PB NN	Flow Stem M Large Control Filter F Sensing Diaphragm d V-Port Throttling Plug V Orifice Assembly U St. St. 316 Control Accessories N St. St. 316 Internal Trim (Closure & Seat) T St. St. 316 Actuator Internal Assembly D Delrin Bearing R Viton Elastomers for Seals & Diaphragm E Pressure Gauge 6
No Additional Feature			00	ISO-16	16					
Hydraulic Override			09	ISO-25	25					
Multi-Setting Levels - Electrically Selected			45	ANSI-150	A5					
Solenoid Controlled			55	ANSI-300	A3					
Electric Override			59	JIS-16	J6					
Multiple choices permitted				JIS-20	J2	24VDC - N.C.	4DC			Multiple choices permitted

