

## Ball Valves

These ball valves are 2-way floating ball type. They Provide quick, reliable and easy on/off control for manual release, isolating valves and drains.

### Materials of Construction

#### Brass Construction (Fig. 1):

- Body: Chrome plated Brass
- Ball: Chrome plated Brass
- Stem: Brass
- Seats: PTFE
- Packing: FPM O-rings
- Handle: Galvanized Steel
- Nut: Galvanized Steel

#### Stainless Steel Construction (Fig. 2):

- Body: AISI 316, ASTM A351 CF8M
- Ball: AISI 316, ASTM A351 CF8M
- Stem: AISI 316
- Seats: PTFE
- Seals: PTFE
- Handle: AISI 304
- Nut: Stainless Steel, ASTM A194 Gr.8

#### Pressure Rating

- 27.5 bar / 400 psi

#### End Connections

- ¼, ⅜ and ½" NPT
- ¾, 1½ and 2" ISO-7-Rp

#### Approvals

- FM Approved<sup>(1)</sup>
- UL listed<sup>(2)</sup>

#### Notes:

<sup>(1)</sup> FM-Approved to be installed on Bermad deluge valves and water Control Valves

<sup>(2)</sup> In accordance with UL subject 258 (Trim and Drain Valves), for Brass construction only

#### NAB Construction (Fig 3):

- Body: Ni.Al.Bronze ASTM B148 C95800
- Ball: Ni.Al.Bronze B148 C95800
- Stem: Ni.Al.Bronze ASTM B150 C63000
- Seats: PTFE
- Packing: PTFE
- Handle: AISI 316
- Nut/Screw: AISI 316

#### Monel Construction:

- Body: Monel Alloy 400, ASTM B164
- Ball: Monel Alloy 400, ASTM B164
- Stem: Monel Alloy 400, ASTM B164
- Seats: PTFE
- Packing: PTFE
- Handle: AISI 316
- Nut: AISI 316



Fig. 1

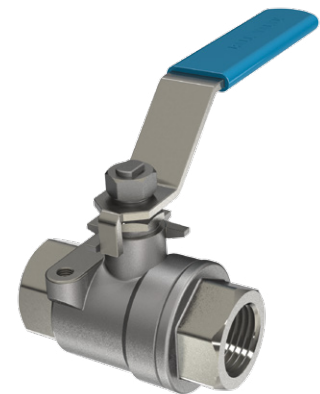


Fig. 2

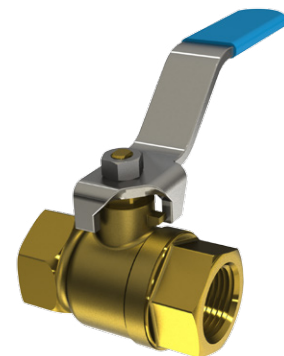


Fig. 3

(for illustration only)