

Pressure Reducing Hydrometer

(Sizes 2-10"; DN50-250)

Description

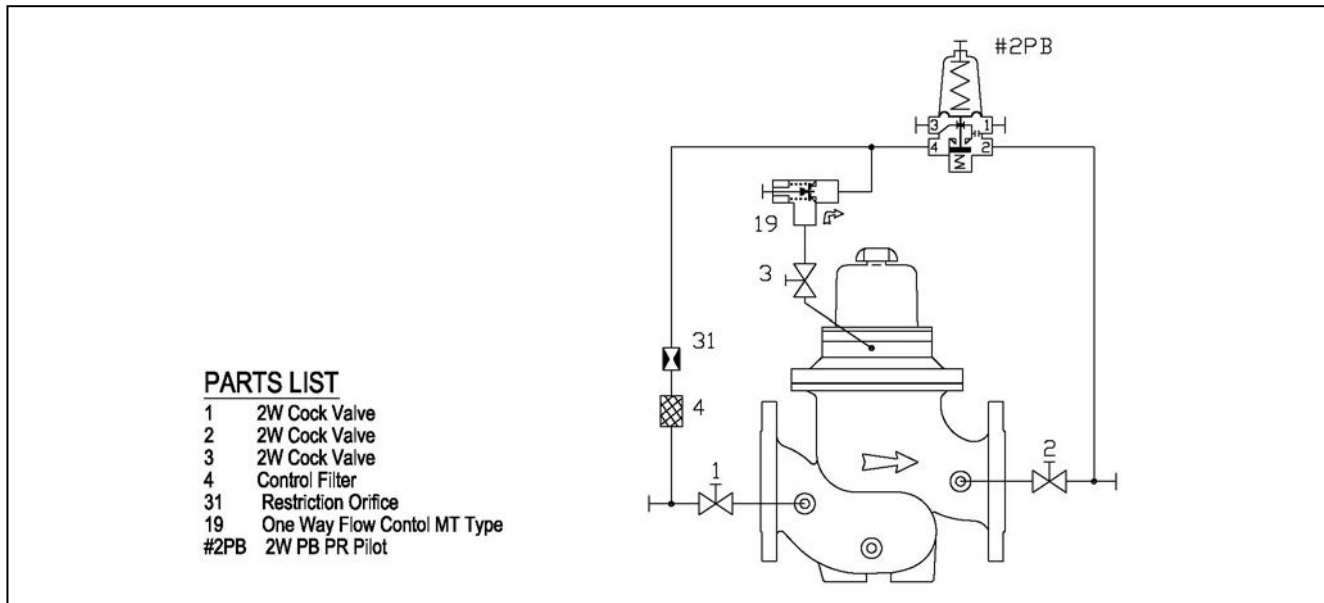
The BERMAD 920 Pressure Reducing Hydrometer integrates a vertical turbine Woltman-type water meter, with a diaphragm actuated hydraulic control valve. This model reduces higher upstream pressure to lower downstream pressure regardless of fluctuating demand or varying upstream pressure

Installation

1. Ensure enough space around the hydrometer for future maintenance and adjustments.
2. Prior to installation, flush the pipeline to insure flow of clean fluid through the hydrometer.
3. For future maintenance, install Isolation gate valves upstream and downstream from the hydrometer.
4. Install the hydrometer in the pipeline with the flow direction arrow in the actual flow direction. Use the lifting ring provided on the hydrometer cover.
5. For best performance, it is recommended to install the hydrometer horizontally and upright. For different positions – consult Bermad.
6. After installation carefully inspect/correct any damaged accessories, piping, tubing, or fittings.
7. Install pressure gauges (instead of the plastic plugs)
8. It is highly recommended to install a strainer Bermad model 70F upstream from the pressure reducing hydrometer, to prevent debris from damaging valve operation.
9. Install a pressure relief valve Bermad model 73Q for protection against momentary pressure peaks.

Commissioning & Calibration

1. Confirm that cock valves [1], [2] & [3] are open (handle parallel to cock-valve body).
2. Open fully the upstream isolating valve and partially the downstream isolating valve, to fill-up, in a slow and controlled manner, the consumers line downstream from the pressure reducing system.
3. Confirm that the supply pressure and the flow through the system are typical. If necessary, create flow by opening a hydrant, or reduce the flow/pressure by adjusting the downstream/upstream isolating valves.
4. Vent air from the hydrometer's control loop by loosening cover tube fitting at the highest point, allowing all air to bleed. Retighten the tube fitting eyebolt.
5. The Model 920 is factory set according to the design pressure request. The set pressure is marked on the pilot's label. Allow the pressure that appears in the downstream pressure gauge to stabilize, meeting the marked set pressure.
6. If the set pressure is either different from the design or the requirements have been changed, unlock the pilots locking nut and slowly turn the pilot adjusting screw Clock-Wise to increase set pressure and Counter -Clock-Wise to decrease it. Allow the 920 to react and the pressure to stabilize.
7. After the pressure is stabilized, lock the pilots locking nut and open fully the downstream isolating valve.
8. The Restriction [31] enables the 2-Way control & reduces hydrometer closing speed.
9. The One Way Flow Control [19] is factory set fully open. To decrease opening speed or to stabilize the hydrometer reaction, turn the needle valve CW.
10. Calibrating Pressure Reducing Systems that include parallel By-Pass PR Valves, require calibrating each of the PR Valves separately, while the parallel PR Valve/s is closed. Calibration should refer to a shared pressure gauge, installed downstream from the system. For best & long term performance, set larger PRV to 0.5 bar lower than smaller PRV.
11. Relief Valves should be set 1 bar above system highest set-pressure.



Trouble-Shooting

- Hydrometer fails to Open:** Check for sufficient inlet pressure, create demand/flow, confirm pilot setting & check cock valves status.
- Hydrometer fails to Close:** Create demand/flow, confirm pilot setting, check needle & cock valves status, clean control filter & detect for clogged ports or fittings, check if any debris trapped in the main valve, confirm diaphragm is not leaking.
- Hydrometer fails to Regulate:** Check needle valves setting, release air trapped in the control chamber & check cock valves status.

Preventative Maintenance

- System operating conditions that effect on the hydrometer should be checked periodically to determine the required preventative maintenance schedule.
- Maintenance instructions (also refer to 900-M0 ASSEMBLY INSTRUCTIONS WW.pdf):
 - Visual inspection to locate leaks and external damages
 - Functional inspection including: closing, opening and regulation.
 - Close upstream and downstream isolating valves (and external operating pressure when used).
 - Once the hydrometer is fully isolated vent pressure by loosening a plug or a fitting.
 - Replace worn parts and all the Elastomers. Lubricate the bolts threads with Anti seize grease.

Spare parts

Bermad has a convenient and easy to use ordering guide for valve spare-parts and control system components. For solenoid valves refer to model and S/N on solenoid tags.

Pub # : IOMEW920

By: RL 5/08

Rev: 01RL-1/08

File name: IOMEW920_05_08

appliceng@bermad.com • www.bermad.com

The information contained in this document is subject to change without notice.

BERMAD shall not be liable for any errors contained herein. All Rights Reserved. © Copyright by BERMAD Control Valves.

