

3/2 Solenoid Valve

Direct Acting – Plunger Actuated

This solenoid valve is direct-acting 3/2 (can also be used as 2/2) plunger actuated solenoid valve. It has a compact construction and is suitable for controlling BERMAD's hydraulic control valves using water or air. This solenoid valve does not require a minimum operating pressure and is not affected by the mounting position. Its construction also provides long life and durability. The epoxy encapsulation efficiently dissipates heat, to suit continuous duty applications

Features

- Short response time
- Compact design
- Wide pressure range
- Normally open or closed version



Technical Data

Standard materials:

Body: Stainless steel 316

Elastomers: FPM (Viton®)

Enclosure: Molded epoxy

Internals: Stainless steel

Ports: 1/4", 1/8" NPT

Temperature:

Nominal ambient: 0.5 to 55°C (33 to 131°F)⁽¹⁾

Maximum fluid: 0 to 90°C (32 to 194°F)

Enclosure type:

One-piece molded epoxy.

General purpose: IP 65 with DIN, cable plug

Electrical data:

Voltages:

(ac): 24, 110, 220 (50Hz)

(ac): 24, 120, 240 (60Hz)

(dc): 24

Tolerance: +/-10%

Power consumption:

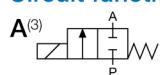
(ac): 21 VA, inrush; 14 VA (8W), holding

(dc): 8W

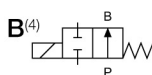
Hydraulic data:

Orifice DN ⁽²⁾	Pressure Range		
	mm	Bar	psi
0.8	0-40	0-580	
1.0	0-30	0-435	

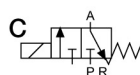
Circuit functions



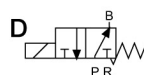
2/2-way
Normally Closed



2/2-way
Normally Open



3/2-way
Normally Closed



3/2-way
Normally Open

Notes:

⁽¹⁾ Max ambient temperature is determined under continuously energized conditions, and with max. fluid temperature.

⁽²⁾ Required filtration – 500 micron.

⁽³⁾ 311A or 311C (R port is plugged)

⁽⁴⁾ 311B or 311D (R port is plugged)

