

PRESSURE RELIEF/ SUSTAINING VALVE

Model IR-230-2W

The BERMAD Pressure Relief/Sustaining Valve is a hydraulically operated, diaphragm actuated control valve that sustains minimum preset upstream (back) pressure. It either opens or shuts in response to a remote pressure command. When installed offline, the BERMAD Model IR-230-2W relieves line pressure in excess of preset pressure..



- [1] BERMAD Model IR-230 protects pump from overload and cavitation, prevents main line emptying, and controls system fill-up
- [2] BERMAD Plastic Back Wash Valve
- [3] BERMAD Combination Air Valve Model IR-C10
- [4] BERMAD Vacuum Breaker

Features & Benefits

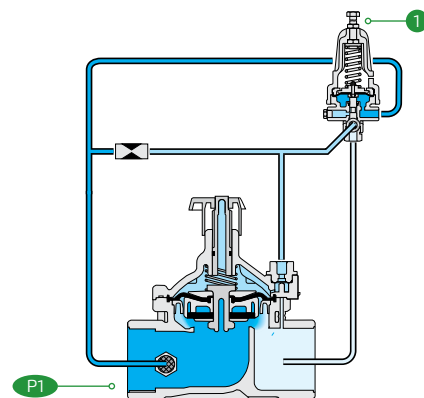
- Line Pressure Driven, Hydraulically Controlled
 - Sustains upstream line pressure controlling system fill-up
 - Relieves excess pressure protecting pump & system
- Plastic Globe Hydro-Efficient Valve
 - Unobstructed flow path
 - Single moving part
 - High flow capacity
 - Highly durable, chemical and cavitation resistant
- Unitized Flexible Diaphragm and Guided Plug
 - Excellent low flow regulation performance
 - Prevents diaphragm erosion and distortion
- Fully Supported & Balanced Diaphragm
 - Requires low actuation pressure
- User-Friendly Design
 - Simple in-line inspection and service

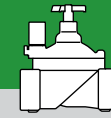
Typical Applications

- Computerized Irrigation Systems
- Pressure Zone Prioritizing
- Greenhouses
- Control of Fertilization Systems
- Filter Stations

Operation:

The Pressure Sustaining Pilot ① commands the Valve to throttle closed should Upstream Pressure P_1 drop below pilot setting, and to modulate open when it rises above pilot setting.





IR-230-2W

Technical Data

Pressure Rating:
10 bar; 145 psi

Operating Pressure Range:
0.5-10 bar; 7-145 psi

Setting Range:
1-7 bar; 15-100 psi

Setting ranges vary according to specific pilot spring. Please consult factory

Materials:

Body, Cover and Plug:
Polyamid 6 & 30% GF

Diaphragm: NBR

Seals: NBR

Spring: Stainless Steel

Cover Bolts: Stainless Steel

Control Accessories:

Tubing and Fittings:
Plastic

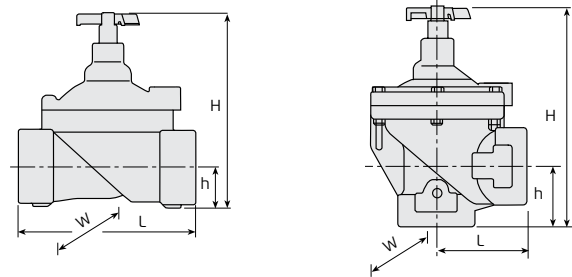
Pilot Spring Range:

Spring	Spring color	Setting Range
J	Green	0.2-1.7 bar
K	Gray	0.5-3.0 bar
N	Colorless	0.8-6.5 bar

Technical Specifications

Dimensions & Weights

For more details of [BERMAD 200 series](#) Please see our full engineering page.



Sizes Inch ; DN	1½" ; 40		2" ; 50	
Pattern	Globe	Angle	Globe	Angle
L (mm)	160	80	170	85
H (mm)	180	190	190	210
W (mm)	125	125	125	125
h (mm)	35	40	38	60
Weight (kg)	1	0.95	1.1	0.91

Flow Properties

Sizes	Inch DN	1½" 40	1½" 40	2" 50	2" 50
Pattern		G	A	G	A
KV		37	41	47	52

Valve Flow Coefficient

$$\Delta P = \left(\frac{Q}{Kv} \right)^2$$

$Kv = m^3/h @ \Delta P \text{ of } 1 \text{ bar}$
 $Q = m^3/h$
 $\Delta P = \text{bar}$

Flow Chart

