



Maintenance Instructions

# Backwash Filter Valve

Model 350-4x4



# 1 | Disassembling the actuator from the valve

A.

Disconnect the control tube.



B.

Turn the actuator counter clockwise.  
(If necessary, use a suitable wrench or spanner.)



C.

Pull or Slide the actuator out of the  
valve body, pulling gently upwards.



## 2 | Replacing the seal

### A.

Release the closure locking nut, using two 13/19mm wrenches.



### B.

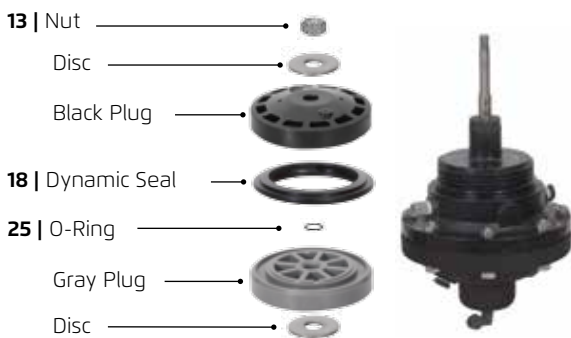
Remove the plug washer and then remove the seal. Check the condition of the seal and replace as required.



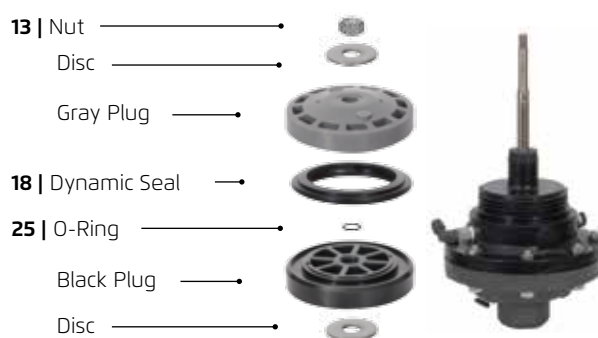
### C.

Replace the components of the closure assembly in the order shown here, from bottom to top. Pay attention to the position of the parts and their direction according to the different models (Angular model - black cover; Straight model - gray cover).

#### Angle Flow Model



#### Straight Flow Model



**D.**

Tighten the closure nut to ensure locking.  
Use OMNIFIT 200M or similar glue.



**E.**

Check the condition of the actuator O-ring and replace as required.



**F.**

Apply a silicon lubricant on the O-ring and thread when fitting the actuator onto the valve body.



### 3. Replacing the diaphragm

A.

Open the 8 bolts of the closure assembly, using two 17mm wrenches.

- 15 | Bolt
- 17 | Disc
- 16 | Nut



B.

Remove the cover. Pay attention to the position of the parts and their direction according to the different models (Angled model - black cover; Straight model - gray cover).

**Angle Flow Model**

**Straight Flow Model**



C.

Pulling gently, slide the shaft out of the separation partition.

**Angle Flow Model**

**Straight Flow Model**



**D.**

Open the locking nut with the aid of two wrenches - a 19mm spanner and 13mm spanner.



**E.**

Remove the diaphragm washer.  
Check and replace diaphragm as required.



**F.**

Reassemble the diaphragm assembly, paying attention to the order of the parts and their position in accordance with the type of model.

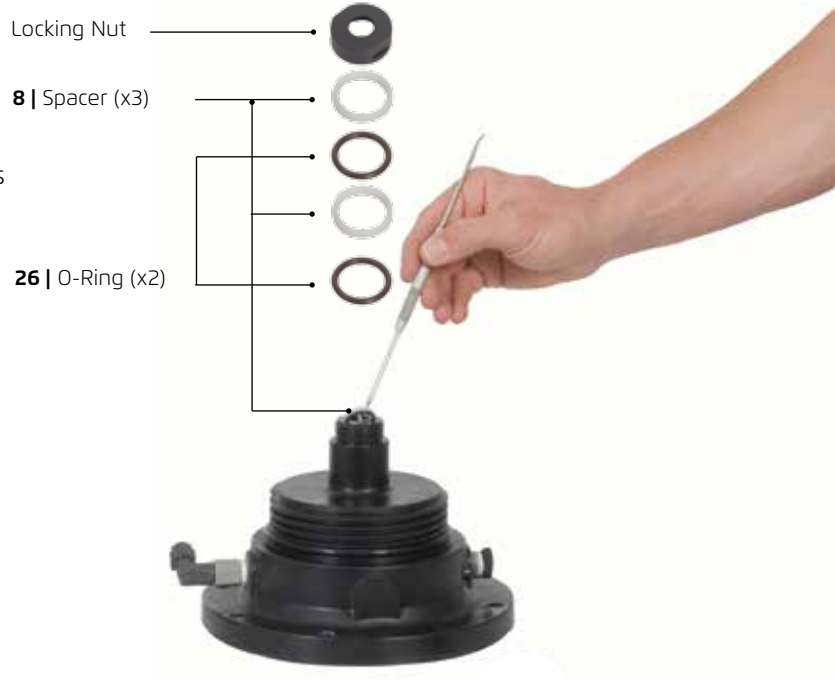
To ensure locking of the nut, use OMNI200M glue ,or equivalent.



## 4. Replacing the Shaft Seals

A.

Using a suitable tool, remove both shaft O-rings from the separation partition. Replace them with new ones as required.






Use a silicon lubricant when reassembling the shaft.



## 5. Replacing the seats

**A.**

Separate the lower adaptor from the valves' body, using a 17mm wrench.

<b>Angle Flow Model</b>	
Grooved 4"	
<b>49</b>	
<b>Straight Flow Model</b>	
Grooved 4" x Int.	
Thread 3"	
<b>49a</b>	
<b>Straight Flow Model</b>	
Union Connector (Havazelet)	
75mm	
<b>49b</b>	



**B.**

Separate the valve body assembly from the lower Adaptor assembly, using a screwdriver.



**C.**

Inspect the seats visually. In case of damage, go to next step (C).





**D.**

Check the condition of the seat and of the O-Ring, and replace as required. Ensure the O-Ring (27) is in place before closing.



**E.**

Check the condition of the lower adaptor O-Ring and replace as required.



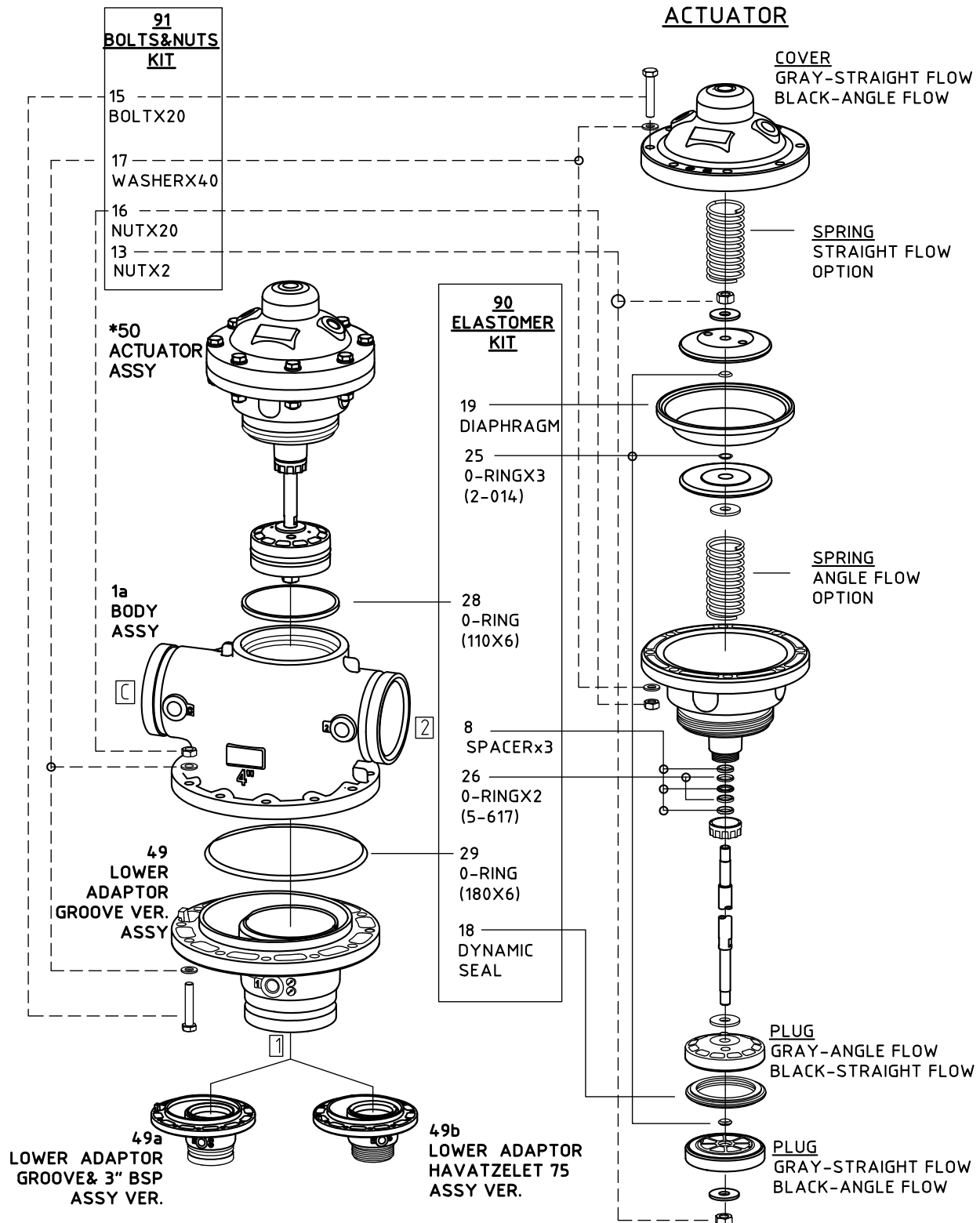
**F.**

Reconnect the lower adaptor to the valve body.



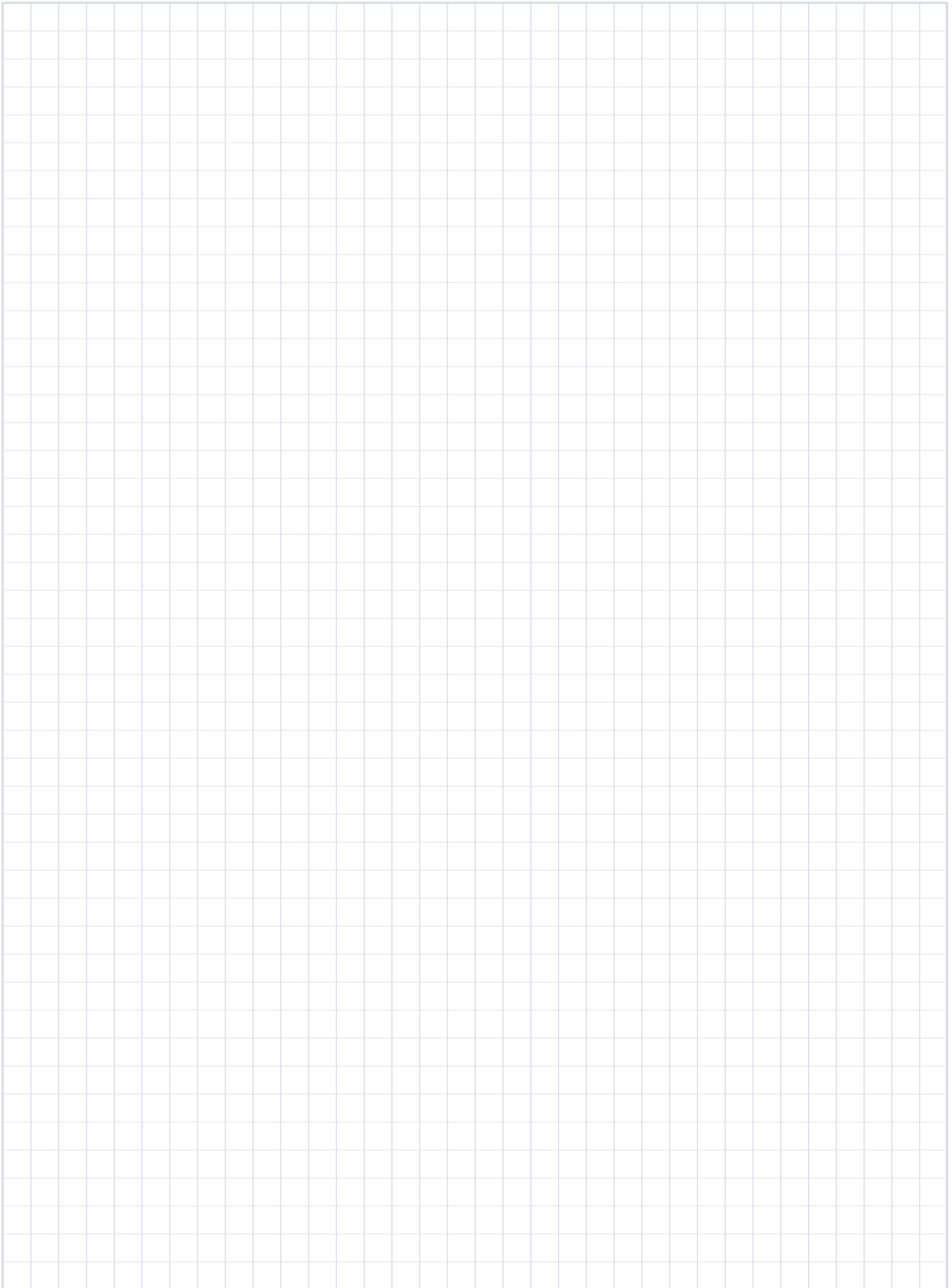
# Plastic Backwash Filter Valves, Double Chamber, Straight/Angle & Reverse Flow -

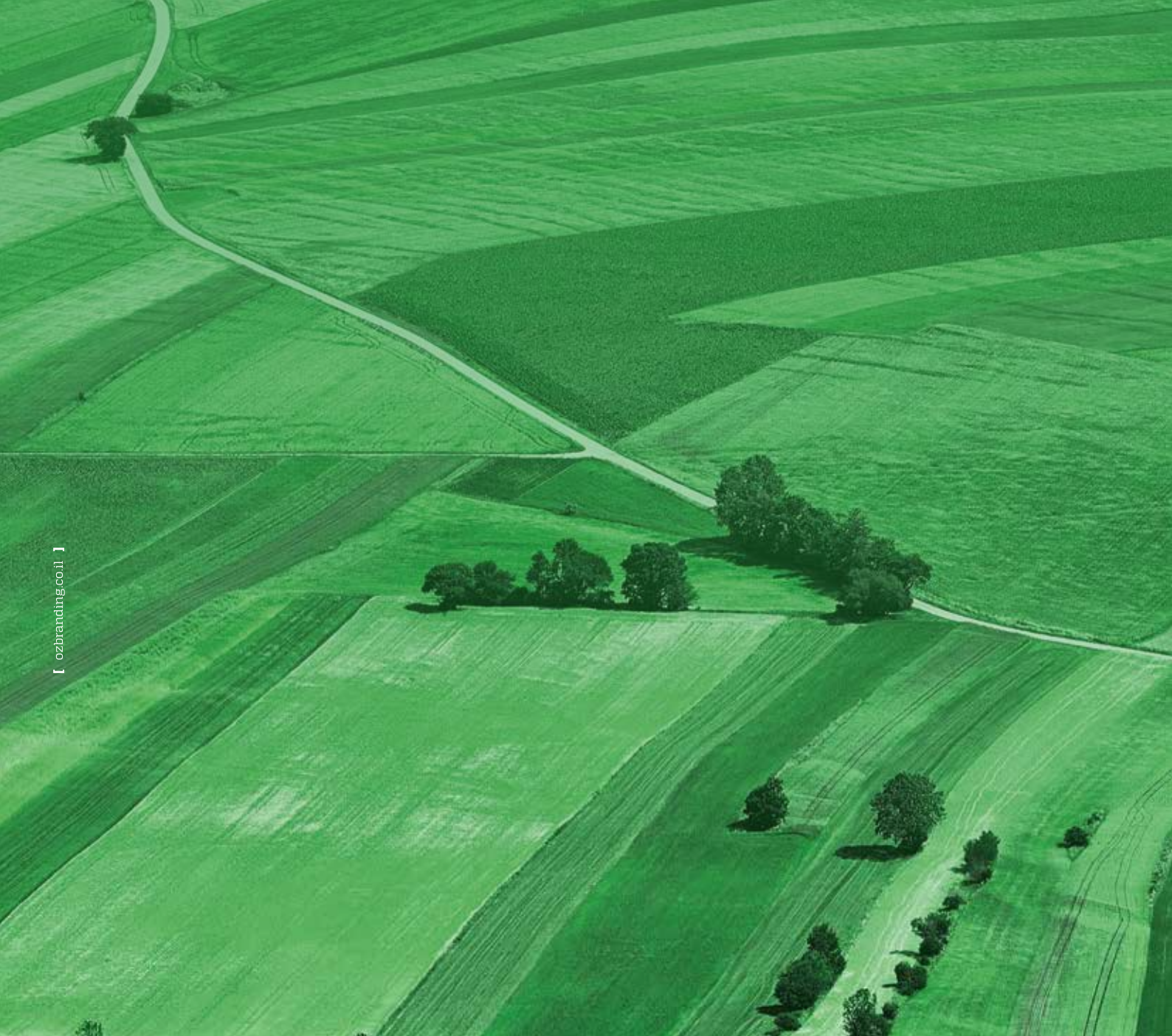
Model 350 4X4 (Page 10d in BERMAD's Spare Parts Guide)



\* ACCORDING TO VALVE TYPE

When ordering please mention page no 10d





[ ozbranding.co.il ]



[www.bermad.com](http://www.bermad.com)

© Copyright 2007-2012 Bermad CS Ltd. All Rights Reserved. The information contained in this document is subject to change without notice. BERMAD shall not be liable for any errors contained herein.

PT3AE13-4x4 Rev. 1 April 2017