



Maintenance Instructions

Backwash Filter Valve

Model 350-A-2X2



1 | Disassembling the actuator from the valve

A.

Disconnect the control tube.



B.

Turn the actuator counter clockwise.
(If necessary, use a suitable wrench or spanner.)



C.

Pulling gently upwards, slide the
actuator out of the valve body.



2 | Replacing the seal

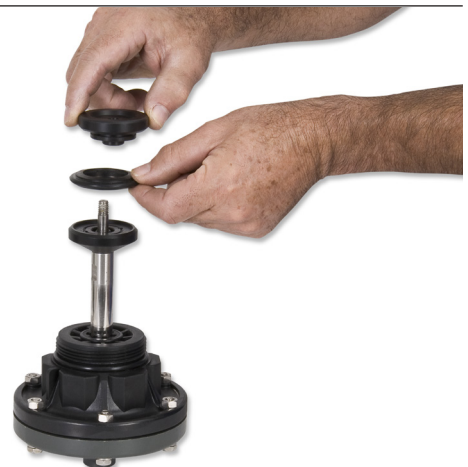
A.

Using two 13mm wrenches, release the closure locking nut.



B.

Remove the plug washer and then remove the seal. Check the condition of the seal and replace as required.



C.

Replace the components of the closure assembly in the order shown here, from bottom to top.



D.

Tighten the closure nut to ensure locking.
Use OMNIFIT 200M or similar glue.



E.

Check the condition of the actuator O-ring
and replace as required.



F.

Apply a silicon lubricant on the O-ring
and thread when fitting the actuator
onto the valve body.



3. Replacing the diaphragm

A.

Using two 11mm wrenches, open the six bolts of the closure assembly.

14 | Bolt

15 | Washer

16 | Nut



B.

Remove the cover. Pay attention to the position of the parts and their direction according to the different models (Angular model - black cover; Straight model - gray cover).

Angle Flow Model

6 | Conic Spring
(under the diaphragm)



*11 | Black Cover

Straight Flow Model

6 | Conic Spring
(above the diaphragm)



11** | Gray Cover

C.

Pulling gently, slide the shaft out of the separation partition.

Angle Flow Model

3 | Disc Stopper



Straight Flow Model

3 | Disc Stopper



D.

Open the locking nut with the aid of two wrenches - a 9/16 spanner and 13mm spanner.

Angle Flow Model



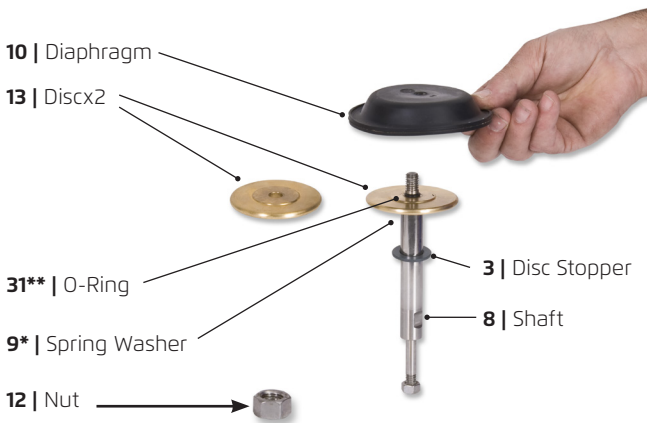
Straight Flow Model



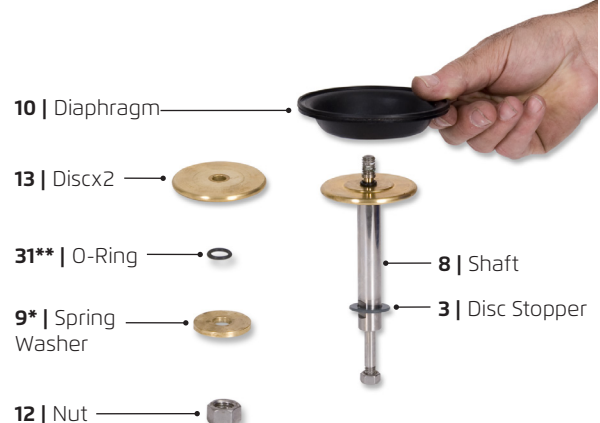
E.

Remove the diaphragm washer. Check and replace diaphragm as required.

Angle Flow Model



Straight Flow Model



F.

Reassemble the diaphragm assembly, paying attention to the order of the parts and their position in accordance with the type of model. Use a suitable type of glue to ensure locking of the shaft nut.

Angle Flow Model



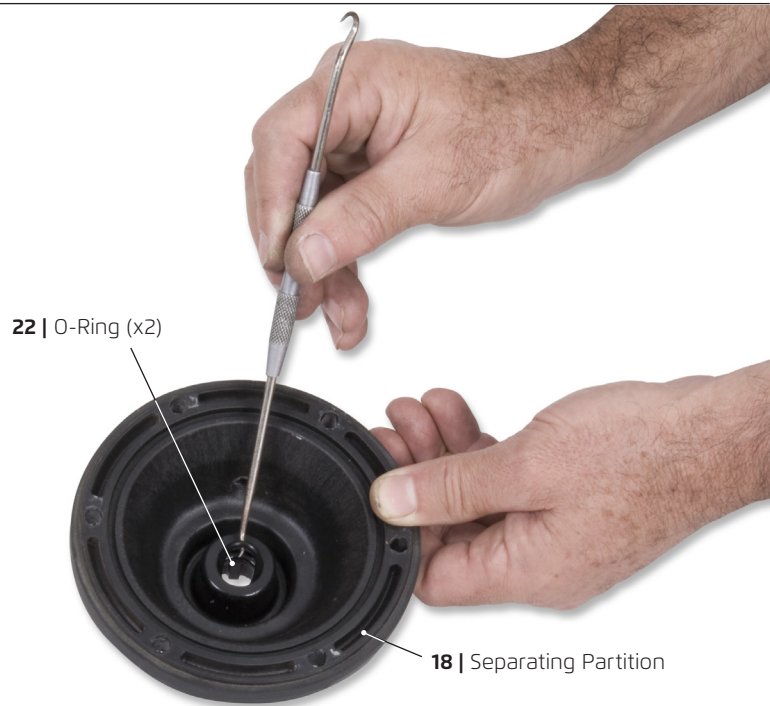
Straight Flow Model



4. Replacing the Shaft Seals

A.

Using a suitable tool, remove both shaft O-rings from the separation partition. Replace them with new ones as required.



Use a silicon lubricant when reassembling the shaft.



5. Replacing the seats

A.

Using a 13mm wrench, open the 8 bolts that connect the body assembly to the lower adaptor assembly.

24 | Nut (x8)

23 | Washer (x8)

20 | Bolt (x8)



B.

Using a screwdriver, separate the valve body assembly from the lower adaptor assembly.

25a | Lower Adapter assembly

1a | Body assembly



C.

Inspect the seats visually. In case of damage, go to next step (C).

27 | Upper Seat

2 | Lower Seat

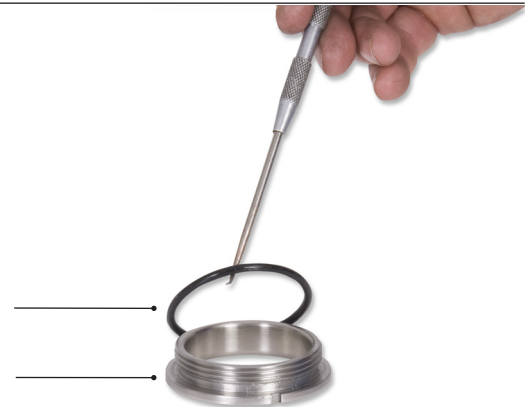


D.

Ensure that O-Ring (26) is in place before closing. Check the condition of the seat and of the seal, and replace as required.

26 | O-Ring

1 | Upper + Lower Seat



E.

Check the condition of the lower adaptor seal and replace as required.

29 | O-Ring



F.

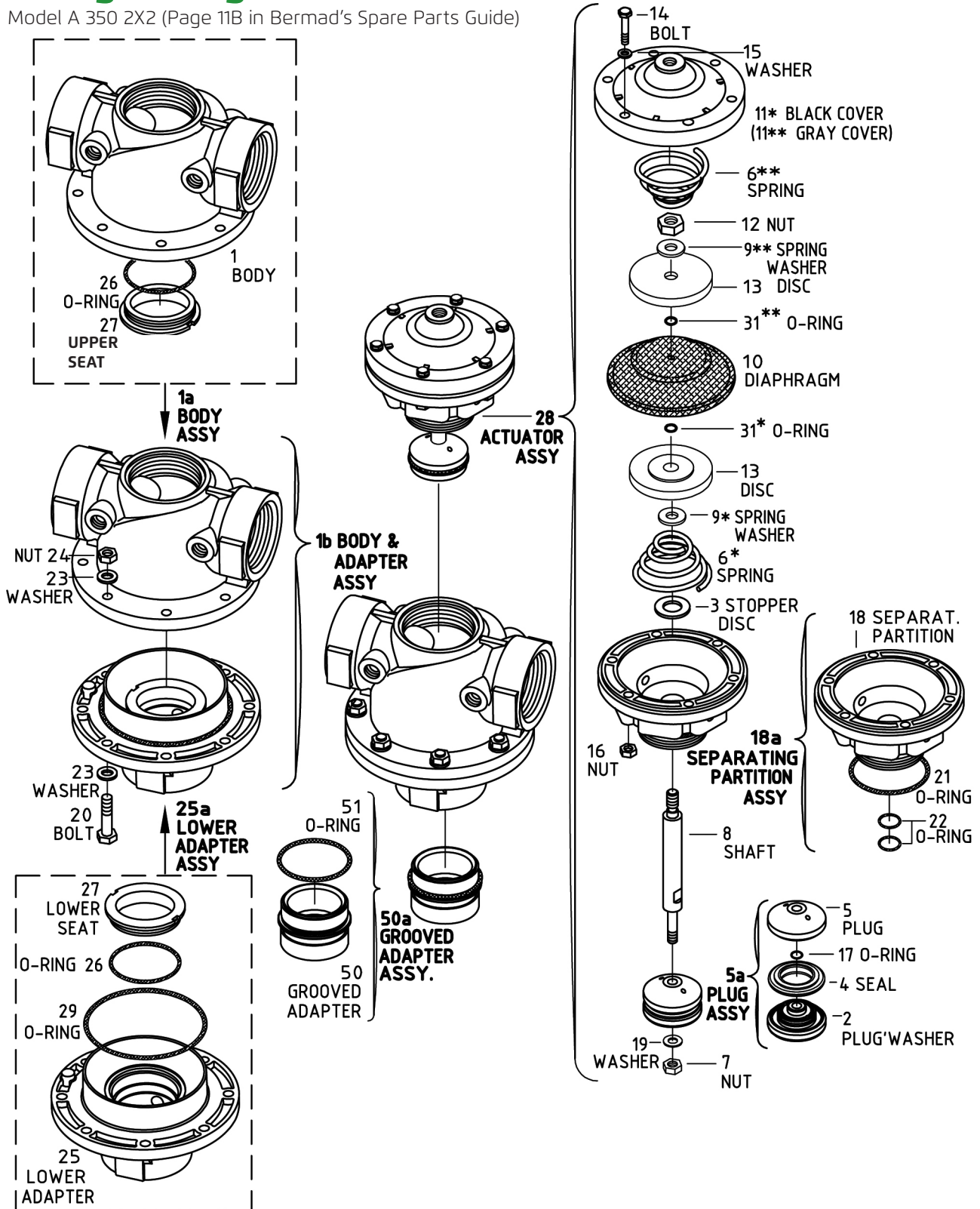
Reconnect the lower adaptor to the valve body.

Protrusion
Indentation



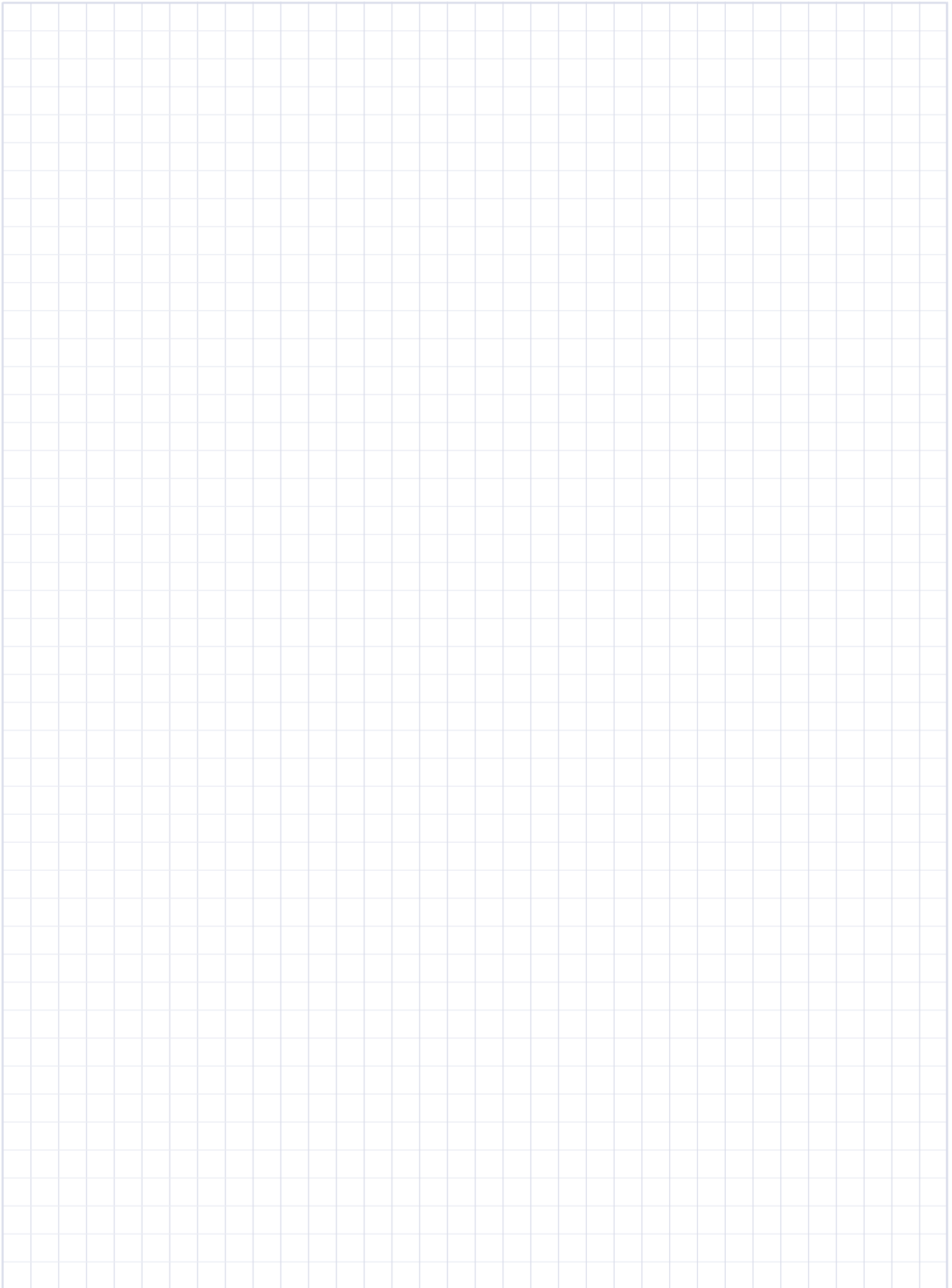
Plastic Backwash Filter Valves, Double Chamber, Straight/Angle & Reverse Flow -

Model A 350 2X2 (Page 11B in Bermad's Spare Parts Guide)



When ordering please mention page no 11A

* - ANGLE / REVERSE ANGLE FLOW OPTION
 ** - STRAIGHT / REVERSE STRAIGHT FLOW OPTION





[ozbranding.co.il]



info@bermad.com • www.bermad.com

© Copyright 2007-2012 Bermad CS Ltd. All Rights Reserved. The information contained in this document is subject to change without notice. BERMAD shall not be liable for any errors contained herein.

PT3GE01-Model A April 2017