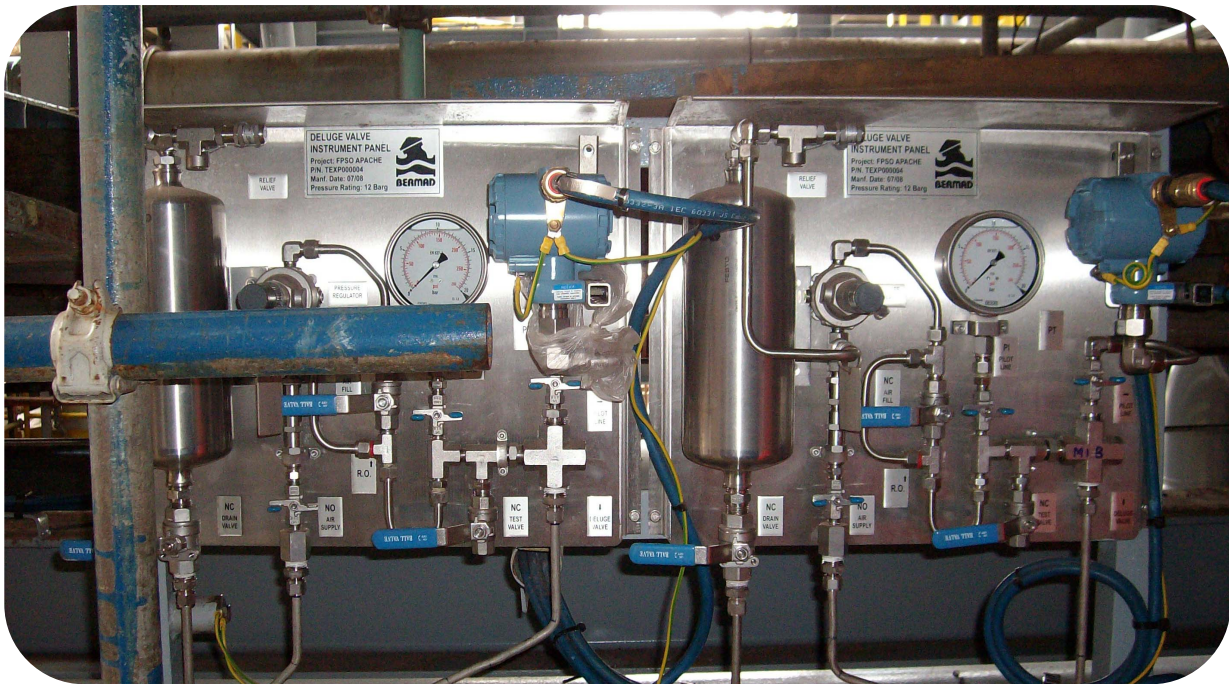


BERMAD Fire Protection

FPSO Ningaloo vision Apache



Project Name	FPSO Ningaloo vision
Country	Western Australia
Application	On –Off Deluge Valves
Bermad Solution	FS-400E 6D Electro Pneumatic operated Deluge Valve with panel mounted AMD – Intrinsically Safe NAB body W/Monel piping and fittings Double proximity limit switch , AMD 76 W/A Tan

BERMAD Fire Protection

FPSO Ningaloo vision Apache

Optional Text	<p>Activation on the deluge valves is via pneumatic fusible plugs line and remote from the control room. A special air instrument trim maintains and regulates the instrument air to the deluge valve and the fusible plugs line. All air instrument installed on a Panel including air reservoir and regulating & restriction device.</p> <p>Indication of the pneumatic pressure achieved using a pressure transmitter installed on the panel while deluge valve direct acting position indicator and dual limit switch used to achieve positive indication of the deluge valve opening.</p> <p>All materials used are suitable for seawater fluid including Ni.Al.Bronze body materials and Monel and Hastalloy wetted parts.</p>
---------------	--