



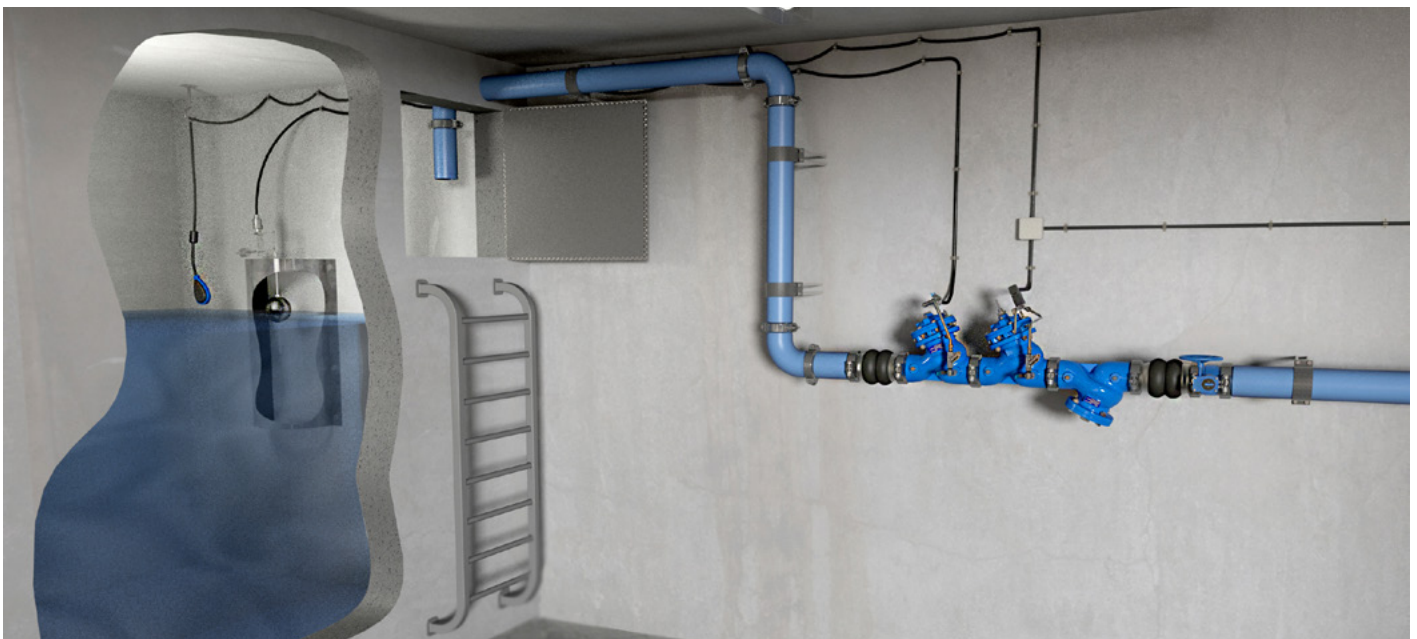
## LEVEL CONTROL VALVE

### with Modulating Vertical Float

#### Model BC-750-67-P

Reservoir Level Control valve with Modulating Vertical Float is a hydraulically controlled, diaphragm actuated control valve that controls reservoir filling to maintain constant water level, regardless of fluctuations in demand.

BERMAD 700 series valves are hydraulic, oblique pattern, globe valves with double chamber unitized actuator, that can be disassembled from the body as a separate integral unit. The valve's hydrodynamic body is designed for unobstructed flow path and provides excellent and highly effective modulation capacity for high differential pressure applications.



Water Reservoir Level Control System, featuring the BC-750-67-P that maintains constant water level in the reservoir. As backup another level control valve is stationed upstream and calibrated to a slightly

higher water level. The backup valve can be specified to operate hydraulically (BC-750-66-P) or electrically (BC-750-65-P).

### Typical Application

- Level Control in water reservoirs of buildings, including basements and roof-top reservoirs, pressure breaking tanks, emergency water storage, and so others.
- Priority and backup management of reservoirs
- Constant level control systems where maintaining full tank level is required
- Level control of undersized tanks in potable water systems in buildings



## Features and Benefits

- High Quality Construction Materials - Reliable, resilient and long lasting operation
- Robust Design - Suitable for constant, intense operation
- In-Line Serviceable - Quick and easy maintenance and service
- Line Pressure Driven - Independent operation, no external power needed
- Unitized Actuator Assembly - Minimal downtime
- Accurate and reliable level control; prevents reservoir overflow and cut-offs
- Ensures uninterrupted supply for building occupants dependent on reservoir system for their water needs
- Easy to horizontally mount and calibrate lightweight float; simple installation and maintenance, long lasting smooth and reliable operation
- 2-way control loop - maintains accurate and stable reservoir level; specially suitable for large surface / low depth tanks
- Float can be installed in a stilling tank, isolating it from waves in the main water tank

## Technical Data

### General:

#### End connections:

Grooved / Flanged / Threaded

**Pressure Rating:** 400 psi; PN25

**Valve Pattern:** Y (Oblique) / Angle

#### Working Temperature:

Cold Water up to 140°F; 60°C

#### Optional Higher Temperatures:

Available on request

### Main Valve Materials:

#### Body, Cover and Partition:

Standard: Ductile Iron

Optional: Stainless Steel 316

**Seat:** Stainless Steel

#### Internals:

Stainless Steel, Tin Bronze & Coated Steel

#### Diaphragm:

Fabric-reinforced synthetic rubber

**Seals:** Synthetic rubber

**Coating:** Blue Fusion bonded epoxy

### Control Trim Materials:

#### Control Accessories:

Stainless Steel / Bronze & Brass

**Tubing:** Stainless Steel / Copper

**Fittings:** Stainless Steel / Brass

\* For other optional material consult BERMAD.

\*\* Materials may vary according to sanitary standard.

## How to Order

Please Specify the requested valve in the following sequence:

BERMAD Segment	Size <sup>1</sup>	Model	Series	Approval Group	End Connections & Pressure Rating
BC	4"	750-67	EN	P1	16
Buildings & Constructions	Inch mm		Series	Potable Water <sup>2</sup>	Up to 250 psi / PN16
	1½" 40		Classic <b>00</b>	European Standards <b>P1</b>	Grooved ANSI C606 <b>VI</b>
	2" 50		Sigma EN <b>EN</b>	NSF 61/372 <b>P2</b>	BS 1378 <b>VB</b>
	2½" 65		Sigma ES <b>ES</b>	Australia Standards <b>P3</b>	ISO-16 <b>16</b>
	3" 80			Unregistered <b>P0</b>	ABNT16 <b>B6</b>
	4" 100				ANSI 150 <b>A5</b>
	6" 150				AST-* <b>S*</b>
	8" 200				Threaded BSP <b>BP</b>
	10" 250				NPT <b>NP</b>
	12" 300				250-400 psi / PN25
					Grooved ANSI C606 <b>V2</b>
					BS 1378 <b>VB</b>
				Flanged ISO-25 <b>25</b>	
				ABNT25 <b>B2</b>	
				ANSI 300 <b>A3</b>	
				Threaded BSP <b>PH</b>	
				NPT <b>NH</b>	

Ordering code would be

BC-4"-750-67-EN-P1-16

1. Larger sizes available on request
2. BERMAD complies with a wide range of international potable water standards. Please consult with BERMAD about compliance.



NSF 61/372  
USA



Bulgarkontrola  
Bulgaria



ACS  
France



GOST  
Russia



PZH  
Poland

The information contained herein may be changed by Bermad without notice. Bermad shall not be held liable for any errors.

© Copyright 2007-2018 Bermad CS Ltd. July 2018